

商业 地坪系统

Commercial Flooring System



医院
Hospital
学校
School
机场
Airport
酒店
Hotel
办公楼
Office
体育场
Stadium

底涂剂/防潮膜
Primer/DPM
水泥基自流平垫层系列
Self-leveling Underlayment
高级地板粘胶
Flooring Adhesives
基础&修补材料
General Construction & Repair





可靠性和质量之首选

60多年来，亚地斯一直是整个行业中的质量领先者，提供优质并具有超级使用可靠性的建筑用化学材料，是安装人员和批发商的首选品牌。现今，亚地斯依然是独立的家族企业。这表明我们一直在努力获得市场化的创新，并能够保持我们最重要的传统：质量永不打折。我们通过应用最新的强制性质保程序确保了这一点。亚地斯成为建筑用化学材料领域的顶级合作伙伴绝非偶然。

世界市场的领先者

今天，由于强劲的内部增长和明智的国外市场并购，亚地斯集团已在全球拥有 37 家分公司以及 1,800 名员工，遍及各大洲的 50 多个国家。尤其令我们自豪的是，我们几乎全面覆盖了自己的核心市场——欧洲。凭借七大主要品牌，亚地斯集团的全球总营业额 每年超过 4.5 亿欧元，其中 70% 来自德国以外。这是亚地斯成为世界领先的优质专业建材供应商之一的重要里程碑。



极高经济效益的行业系统解决方案

作为本行业的长期合作伙伴，我们了解客户的直接实际要求。材料和施工方法方面的广博经验以及与技术精湛客户的不断交流，是我们最重要的灵感源泉。我们以此为基础开发产品系统，采取专业方法来满足专业人士的需求，从而在市场中赢得了尊贵地位。我们的系统易于使用、施工速度快且覆盖面广，因此完美匹配并且具有极高经济效益。

First choice for reliability and quality

For more than 60 years, ARDEX has been the quality leader for an entire industry, offering excellent building chemicals with supreme processing reliability – the brand of choice for installers and wholesalers. ARDEX today is still an independent family-owned business. This means that in our permanent efforts to achieve market-shaping innovations, we have been able to retain our most important tradition: uncompromising quality. This is something we guarantee by applying the latest rigidly enforced quality assurance procedures. It's no coincidence that ARDEX is regarded as the premium partner in the buildings chemicals sector.



A leading player on world markets

Strong internal growth and intelligent acquisitions in foreign markets today put the ARDEX Group on the map with 37 subsidiaries and 1,800 employees in over 50 countries on all continents – boasting a virtually end-to-end presence in our core market of Europe. With its seven major brands, the ARDEX Group generates total turnover worldwide of more than 450 million euros, of which 70 percent is generated outside Germany. This marks an important milestone for ARDEX in becoming one of the world's leading suppliers of high-quality specialist building materials



Cost-effective system solutions for the trade

As a longstanding partner to the trade, we know the practical requirements first-hand. Our vast experience of materials and working methods and our constant dialogue with customers in the skilled trades are our most important source of inspiration. We draw on this to develop product systems that command such respect in the marketplace because we take a professional approach to meeting professionals' needs. Our systems are optimally matched and extremely cost-effective thanks to their ease and speed of processing and high coverage.



世博德国馆 EXPO 2010 Germany Pavilion
ARDEX K 31, ARDEX P 51



水立方 Water Cubic
ARDEX K 31, ARDEX AF 961



贵阳机场 Guiyang Airport
ARDEX WPM 256, ARDEX WPM 300, ARDEX AF 2510



上海地铁 Shanghai Subway Station
ARDEX CL 11, ARDEX A 35, ARDEX P 51



香港罗湖站航站楼 HK Lo Wu Station Terminal Building
ARDEX CL 11, ARDEX P 51, ARDEX WPM 300



香港律敦治医院 HK Ruttonjee Hospital
ARDEX CL 11, ARDEX P 51



成都机场 Chengdu Airport
ARDEX CL 11, ARDEX R 2 PE,
ARDEX AF 2510



上海博物馆 Museum (Shanghai)
ARDEX CL 11, ARDEX P 51,
ARDEX AF 2510

基层本身——平整度不够 Substrate itself —— not enough flatness



- 影响自流平完工后的平整度
- 直接影响面材的表现力
- Affect the flatness of the completed self-leveling
- Directly affect the appearance of the floor covering material

基层本身——含水率超标 Substrate itself —— excessive moisture content



- 基层水汽上扬易产生鼓包
- Moisture rises from the substrate and will cause bubbling of floor finish.

基层本身——强度不足 Substrate itself —— not enough strength



- 强度不足造成自流平开裂和空鼓
- Insufficient strength will lead to self-leveling cracking, hollowing and debonding.

基层本身——均匀度差 Substrate itself —— poor uniformity



- 造成底涂渗透不均匀
- 自流平收缩不均匀，产生裂缝
- Will cause uneven penetration of the primer
- Uneven shrinkage of self-leveling will cause cracks

底涂剂施工——透底 Primer installation —— discoloration



- 不能完全封住基面毛细孔
- 容易在自流平表面出现针孔现象
- 导致在地板表面产生鼓包
- Can't seal the pores completely
- Easy to cause pinhole on self-leveling surfaces
- Causes hollowing on the floor surface

底涂剂施工——裂缝及空洞未修补 Primer installation —— unpatched cracks and voids



- 易造成自流平开裂
- Can easily cause self-leveling crack

底涂剂施工——未使用有效的机具 Primer installation —— Improper tools



- 灰尘及附着物无法清理干净
- 降低粘结强度
- Unable to clean the dust and dirt
- Reduce the bonding strength

环氧树脂底涂剂施工——抛砂不均匀 Epoxy resin primer installation —— uneven sand seeding



- 降低机械锚固，降低粘结强度
- Reduce mechanical anchorage and bonding strength

自流平施工——加水量过多 Self-leveling application —— too much water



- 降低自流平的强度等级
- 加长自流平的干固时间
- 增高自流平的含水率
- 影响总工期
- Reduce the strength grade of self-leveling
- Prolong drying time
- Increase moisture of self-leveling
- Prolong total construction installation period

地板胶施工——晾胶时间过长/表面结皮 Flooring adhesive application —— overly dried/skinned



- 降低粘结强度
- 地板容易脱胶空鼓
- Reduce bonding strength
- Easy to cause adhesive breakdown and debonding

成品的保护 Protection of the finished floor



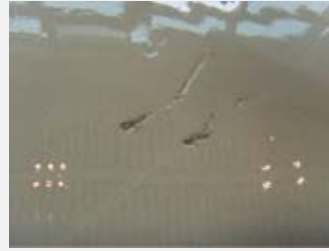
- 无法确保地坪的质量
- Quality of the floor cannot be guaranteed

施工工艺流程的倒置 Incorrect sequence of construction steps



- 在已完工的地面上，重新开凿，破坏地面的整体性，后期修补又无法确保质量，易引起开凿部位面层的质量
- Re-dig the floor after the construction has been completed will destroy the wholeness of the ground. The quality of patching can't be guaranteed, which will cause surface quality problems of the dug parts

自流平施工——搅拌不均匀 Self-leveling application —— non-homogeneous mixture



- 降低自流平整体强度
- 无强度的空洞易给上层面材增加空鼓的风险
- Reduce overall strength of self-leveling
- With no strength will cause high risk of surface material debonding

错误的施工工具 Misused construction tools



- 搅拌头剪切力不够
- 无法把材料搅拌均匀
- Mixing tool doesn't have enough shearing force
- Material can't be mixed thoroughly

地面管线埋设的问题 Cable laying issue



- 地面管线埋设过低，易造成后期上层自流平收缩不均匀，引起开裂
- 要求管线上沿离地面2cm以上
- Ground cable and wires are buried too shallow, could easily lead to uneven shrinkage of the self-leveling and cause surface crack
- The depth between pipeline and ground surface is required to be more than 2cm

材料的存放 Material storage



- 材料室外堆放，温差，相对湿度对材料变化非常大，影响材料原有的性能，使其不能发挥原有的设计要求
- When materials are stocked outdoor, temperature, relative humidity can change the material and affect the original performances greatly

· Primer 界面剂



ARDEX P 60
多用途底涂剂



ARDEX P 51
界面接着底涂剂



ARDEX P 82
水性合成树脂底涂剂



ARDEX R 2 PE
无溶剂型环氧树脂底涂剂



ARDEX R 3 E
耐潮环氧底涂剂

· Additive 添加剂



ARDEX E 70
水泥砂浆增强剂



ARDEX E 25
水泥自流平增强剂

· Damp/Waterproofing 防潮/防水系列



ARDEX WPM 256
水性环氧增强和界面剂



ARDEX WPM 300
水性环氧树脂防水防潮膜



ARDEX DPM
双组份环氧防潮膜

• Self-leveling 自流平



ARDEX CL 11
商用型垫层自流平



ARDEX K 31
高强水泥基垫层自流平

• Screed/Patching Mortar 找平/修补砂浆



ARDEX A 35
快凝早强水泥



ARDEX A 45
快速修补砂浆

• Adhesive 地板胶



ARDEX AF 160 U
PVC地材地板胶



ARDEX AF 2510
双组份聚氨酯地板胶



ARDEX AF 380
橡胶地材地板胶



ARDEX AF 778
多用途地毯及亚麻地材地板胶



ARDEX AF 961
环保压敏地板胶

这个施工方案基于基层条件为：

1. 基层必须完全地固化、坚固且能承受一定承载。
2. 地面上所有的污染物例如灰尘、胶水、油漆残留物、油脂、隔离剂和养护剂等必须清除干净。
3. 对于工业地坪的要求，基层表面的拉拔强度必须大于1.5MPa
4. 基层混凝土地面必须达到4周的养护期。
5. 如果基层直接接触地面或者在相对湿度大于75%的情况下，应该做防潮膜。
6. 混凝土基层的含水率应该少于5.5%

这个施工方案应该与相关产品的技术参数相结合

施工概述：

- a. 基层处理
- b. ARDEX底涂剂
- c. ARDEX水泥基自流平
- d. ARDEX地板胶粘剂

1. 基面处理

- 1.1 用全封闭的喷砂机清除掉地面可能影响粘结的水泥浮浆和污染物，使地面的孔隙和纹路保持清晰、干净。安装空调下面的区域，比如管道部位等等，应用类似金刚石角磨机这样的手持设备来打磨。处理好的基面应用真空吸尘器彻底清除掉灰尘等污染物。
- 1.2 所有被损坏的基面都必须修补，可以用ARDEX A 45（快干早凝修补砂浆）或者向亚地斯咨询相关方案。
- 1.3 如果有粗糙或不平整的区域，建议先用ARDEX A 45（快干早凝修补砂浆）进行粗找平。
- 1.4 基层的变形缝需要保留，并且需要用聚氨酯密封胶进行密封。施工缝和裂缝被覆盖后依然会随着地面的位移而活动，最终体现在表面上。
- 1.5 在建筑基础地面上使用防潮层（DPM）是必须的。在具体案例中的使用请联系ARDEX技术服务人员。

2. 底涂的施工方法

以ARDEX P 51/P 60在吸收性基层上为例。

多用途底涂剂使用前，基层必须是干燥且没有积水。

2.1 使用前搅拌

先将多用途底涂用螺旋头重型慢速搅拌器搅拌均匀。

2.2 施作

搅拌完之后立即用刷子、短毛或者中毛的滚筒沾料。当涂完第一遍之后，等到触干之后再继续进行第二遍的涂布。如果因为基层孔隙比较多而导致渗透不均匀，需要多涂几遍。针对非吸收性基层应选用其它合适的ARDEX底涂产品，具体请联系ARDEX技术服务人员。

3. ARDEX 水泥基自流平施工方法

3.1 搅拌

每包25公斤的ARDEX加水量要严格按照使用说明添加干净的水。选择合适的ARDEX水泥基自流平材料。

- a. 标准施工方法 —— ARDEX CL 11
- b. 高强度重载水泥基自流平 —— ARDEX K 31

3.2 施作

施作温度、气温和基层温度必须在10~35℃。将搅拌后的ARDEX水泥基自流平倒在已经完成底涂并准备好的基面上，同时用适当的工具把ARDEX自流平摊开。

穿上钉鞋，在新鲜的浆体走动但避免留下钉鞋印。工作面的大小需要考虑到材料搅拌后的操作时间，也就是说需要在材料流动时间内完成摊铺、整平等接续工作。

用消泡滚筒帮助最后的整平，同时释放浆体里气泡的空气。消泡滚筒必须在材料操作时间内施工完成，在操作时间内，建议最多施工4次。

ARDEX水泥基自流平在23℃下的操作时间大约是20分钟。温度越低，时间越长；温度越高，时间越短。

4. 地板胶的施工方法

4.1 在地板胶前，基层必须干燥，相对湿度RH < 75%

4.2 在地板胶施作之前，需要将表面的脏污、灰尘甚至水迹清除干净。

4.3 搅拌（只针对双组份产品）

地板胶使用前应置于室内温度下一段时间，将B组份完全倒入A组份中以机械搅拌方式进行搅拌约3分钟使其充分均匀混合，搅拌时转速为300-600转/分钟。

4.4 施作

ARDEX地板胶应当均匀地用齿形刮板刮涂在已清理准备好的基层上，避免粘结剂滩涂不均堆积在一起。不要涂覆过大区域，以免超过粘结剂的工作时间而来不及铺设地材。地材可直接铺设在刚刮涂的粘结剂上，无需额外等待时间。地材粘结时轻缓放置平顺铺贴，避免将空气包裹于其中，然后轻轻滚压或拍实即可。粘贴时确保地材和胶粘剂的全面接着并清除溢出表面边端的多余粘结剂。

工具容器在使用完毕后应立即以ARDEX RTC清洗。

粘结完成视面饰材料种类的不同及施工温度约4-6小时后即可开放步行。

施工时，除了参照本说明书外应详细了解面饰材料提供厂商的安装说明。

有些地材需要更进一步的滚压整平。地材接缝如需要加热焊接，至少等待24小时胶粘剂硬化后才能进行焊接动作。

不要在地材刚铺设好就使用湿拖把去清洗地材。要允许足够的时间让胶粘剂稳定后再清洗。

This method statement assumes substrate to be:

1. Substrate must be fully cured, firm and load bearing.
2. All contaminants such as dust, adhesive, coating residues, oil and grease, release agents, curing compounds etc must be removed from the surface.
3. Surface pull out strength of more than 1.5MPa for industrial flooring application.
4. Concrete floors must be at least 4 weeks old.
5. The presence of an effective damp proof membrane if the substrate is in contact with the ground or where the relative humidity in the substrate is in excess of 75%.
6. Moisture content present in the concrete substrate must be less than 5.5%.

This method statement should be read in conjunction with relevant product technical data sheets.

Outline for installation:

- a. Substrate Preparation
- b. ARDEX Primers
- c. ARDEX Self Leveling Compounds
- d. ARDEX Floor Adhesives

1. Substrate Preparation

- 1.1 Totally enclosed shot blasting to a fine perforated and open textured surface that would remove all cementitious laitance and contaminants which might act as a bond breaker and to expose sound substrate beneath.
Floor areas beneath air-con units, ducting etc. and around perimeter should be prepared using hand held preparation equipment like diamond and angle grinders.
Prepared substrate should be vacuumed thoroughly to remove dust contaminants.
- 1.2 Any damage areas must be made good with ARDEX A 45 (Rapid Drying and Hardening Internal Repair Mortar) or consult ARDEX for alternative solutions.
- 1.3 Any rough or uneven areas to be smoothed with ARDEX A 45 (Rapid Drying and Hardening Internal Repair Mortar).
- 1.4 Movement joints in the sub-floor must be carried through the topping and properly sealed with polyurethane sealant. Construction joints and cracks not subject to movement may be overlaid but should the floor move in anyway, these defects will reflect through the system.
- 1.5 Use DPM if necessary and always use for below ground structure. In case of doubts, contact ARDEX Technical Service for clarification.

2. APPLICATION OF ARDEX PRIMERS (ARDEX P 51/P 60 on standard porous substrate as example)

The substrate is recommended to be dry before the application of ARDEX Primers.

- 2.1 Stirring Before Application
Before using ARDEX Primers, use helix stirrer head with slow speed electric drill to stir until it is homogeneous.
- 2.2 Application
Immediately after stirring, apply evenly with a stiff bristle push broom.
After application of the 1st coat, wait till it is tack dry before application of the 2nd coat. Depending on the uniformity of the coating and the porosity of the concrete substrate, at times, application of more than 2 coat is necessary.
In case of non-absorbent substrate, other ARDEX Primers should be used, please contact ARDEX Technical Service.

3. APPLICATION OF ARDEX SELF LEVELING COMPOUND

3.1 Mixing

Each bag of ARDEX self-leveling compound is 25kg and the mixing ratio of clean water for each bag of material should be followed strictly in accordance with the technical datasheet.

Select the appropriate ARDEX self-leveling compound:

- a. Standard Application – ARDEX CL 11
 - b. Heavy Duty High Compressive Strength – ARDEX K 31
- Put the clean water into a clean container first and slowly pour ARDEX self-leveling compound powder into the container while at the same time start mixing with a heavy duty electric drill fitted with mixing paddle for 2 to 3 mins.

3.2 Application

The application temperature for ARDEX self-leveling compound, both atmospheric and substrate, should be from 10 to 35°C.

Pour the mixed material onto the prepared & primed substrate and then spread into place using appropriate tools.

Studded shoes should be worn when walking in the fresh mortar to avoid leaving marks. Work to an area that suits the size of the installation team so that the mixed material can be spread, gauged and trowelled within the flow time of the material.

The use of a spiked roller will aid the final leveling of the material and at the same time release air bubbles in the material. Spiked roller should be used within the flow time of the product and limited to a maximum of 4 passes.

ARDEX self-leveling compounds have a flow time of approx. 20 mins at 23°C. At lower temperatures this time is extended and at higher temperatures this time is shortened.

4. APPLICATION OF ARDEX Adhesives

- 4.1 Before application of ARDEX Adhesives, substrate must be dry with a relative humidity of < 75%.
- 4.2 Clean the surface to remove dirt, dust and ensure it is free from any water before application of ARDEX Adhesives.
- 4.3 Mixing(only for 2K adhesive)

Before using ARDEX Adhesives, maintain ARDEX Adhesives at an adequate temperature. Add the complete content of Compound B into Compound A and use an electric drill with suitable stirring device and revolution of 300–600 per min to mix the content thoroughly for about 3 minutes.

4.4 Application

Spread ARDEX Adhesives with suitable notch trowel to the prepared and clean surface evenly. Do not apply more adhesive than can be covered during the open time.

Lay the floor covering directly on the adhesive bed without flash off time and without air pockets. The floor covering to be laid must be relaxed and lie flat, otherwise they must be weighted down. Ensure that there is correct transfer of the adhesive to the back of the floor covering. Remove any superfluous adhesive from the substrate floor covering immediately with a smooth spatula.

Clean tools immediately after use with ARDEX RTC.

The floor covering can be walked on after 4–6 hours dependant on temperature and floor covering.

In addition to this information always follow the laying instructions of the floor covering manufacturer.

Some floor covering materials may require further rolling and seams that require heat welding, wait till at least 24 hours to ensure that the adhesive is dry and hardens before performing this operation.

Do not use wet mop to clean the floor covering immediately after laying. Wait till the adhesive is totally dry and hardens before any cleaning commences.

系统 1: 橡胶地板安装系统

NO 1: Rubber Floor Installation System

系统 2: PVC安装系统

NO 2: PVC Floor Installation System

系统 3: 亚麻地板安装系统

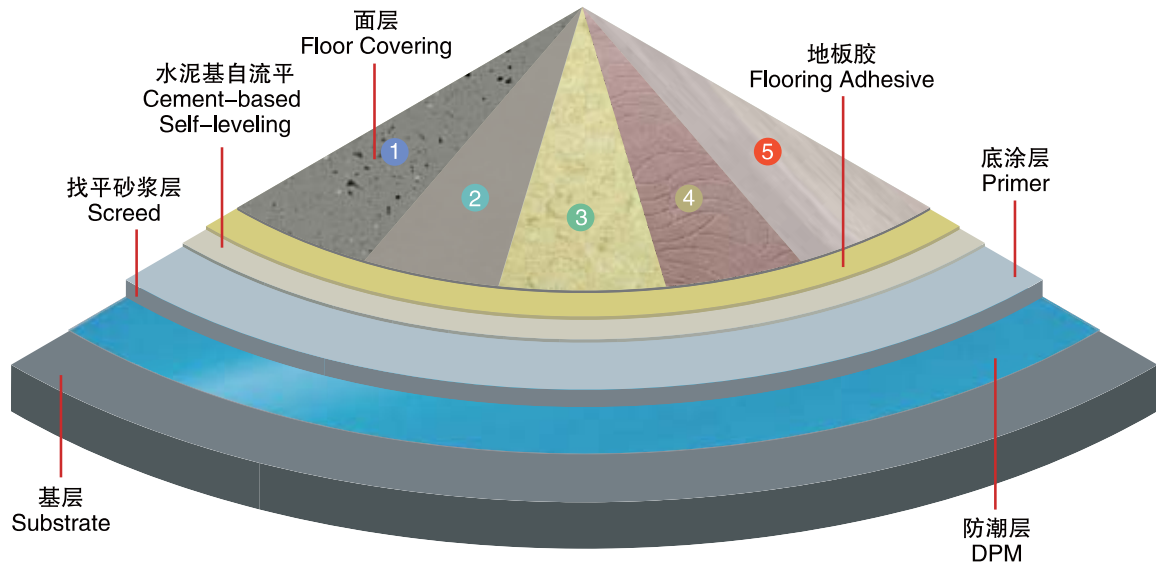
NO 3: Linoleum Floor Installation System

系统 4: 地毯安装系统

NO 4: Carpet Installation System

系统 5: 木地板安装系统

NO 5: Wooden Floor Installation System



1 系统1: 橡胶地板安装系统 Rubber Floor Installation System	2 系统2: PVC安装系统 PVC Floor Installation System
3 系统3: 亚麻地板安装系统 Linoleum Floor Installation System	4 系统4: 地毯安装系统 Carpet Installation System
5 系统5: 木地板安装系统 Wooden Floor Installation System	

• 底涂层 Primer

ARDEX P 51 界面接着底涂剂

ARDEX P 82 水性合成树脂底涂剂

ARDEX R 2 PE 无溶剂型环氧树脂底涂剂

• 水泥基自流平 Cement-based Self-leveling

ARDEX CL 11 商用型垫层自流平

ARDEX K 31 高强水泥基垫层自流平

ARDEX E 25 水泥自流平增强剂

• 防潮层 DPM

ARDEX DPM 双组份环氧防潮膜

ARDEX WPM 300 水性环氧树脂防水防潮膜

• 地板胶 Flooring Adhesive

ARDEX AF 160 U PVC地材地板胶

ARDEX AF 2510 双组份聚氨酯地板胶

• 找平砂浆层 Screed

ARDEX A 35 快凝早强水泥

ARDEX E 70 水泥砂浆增强剂

ARDEX A 45 快速修补砂浆

• 地板胶 Flooring Adhesive

ARDEX AF 380 橡胶地材地板胶

ARDEX AF 778 多用途地毯及亚麻地材地板胶

ARDEX AF 961 环保压敏地板胶



ARDEX P 60
多用途底涂剂
Multiprimer

产品说明

ARDEX P 60是一种搭配使用于ARDEX各式产品（防水、粘结剂、自流平），针对吸水性基面增强基面与辅料间的附着性能的水性树脂界面剂，适用的基材包括水泥纤维板、混凝土、水泥砂浆找平层、粉光层、石膏板、轻质混凝土砌块及红砖等。

应用范围

- 室内及室外，商用或住宅用，墙面或地面皆可；
- 适用基材：水泥纤维板、混凝土、水泥砂浆找平层、粉光层、石膏板、轻质混凝土砌块及红砖等。

包装和储存期

20kg 桶装。

未开封室内阴干处约为12个月，冬季需防冻。

DESCRIPTION

ARDEX P 60 is a general purpose substrate primer, used to seal absorbent/porous substrate and improve their adhesion to ARDEX products. It can be used over substrates including fiber cement sheets, concrete, cement render and screeds, particle board, and ACC (light weight concrete blocks).

APPLICATION RANGE

- Internal & external; Residential, Commercial; Walls, floors;
- Substrates: Fiber cement sheets, concrete, cement render and screeds, particle board, and ACC (light weight concrete blocks).

PACKAGING & SHELF-LIFE

20kg.

12 months when stored in the original unopened packaging in dry conditions. Frost should be avoided.



ARDEX P 51
界面接着底涂剂
Primer and Bonding Agent

产品说明

ARDEX P 51可作为湿气抑制、浸封底层孔隙、接着界面剂等使用。作为底涂剂主要功能为抑制底层孔隙中所含空气上升导致后续表面气孔产生，及避免功能性砂浆拌合施工后其水分过快被底层吸收造成水化作用的不完整。ARDEX P 51亦可作为暂时性的表面浸封使用，能达到防污防尘及较好养护的效果。无溶剂，合成分散型树脂，涂布后干燥快速，能隔绝水分渗入。

应用范围

室内用料。作为砂浆与基层间的界面接着，广泛使用在自流平、镟整修补砂浆施工前的打底动作；底层为混凝土、水泥砂浆、水泥纤维板及木质压密板上都可使用。

包装和储存期

20L桶装；

未开封室内阴干处约为24个月，冬季需防冻。

DESCRIPTION

ARDEX P 51 can be used as primer & bonding agent for moisture suppression and to seal pores of the substrate. As a primer, the primary function is to suppress the air from coming up through the substrate pores, thus to prevent pores occur on the surface, and to avoid incomplete hydration caused by fast moisture absorption into the substrate when using the mixed functional mortar. ARDEX P 51 can also be used for temporary sealing to achieve dust and dirt free performance. Solvent-free, synthetic resin dispersion, fast drying after coating which can prevent moisture penetration effectively.

APPLICATION RANGE

ARDEX P 51 is used as interior material. As the bonding agent between the mortar and the substrate, ARDEX P 51 is widely used as primer before the construction of self-leveling and repair mortar; it can be used on different substrates such as concrete, sand screed, cement fiberboard and wooden compaction plate.

PACKAGING & SHELF-LIFE

20L bucket;

24 months when stored in the original unopened packaging in dry conditions. Frost should be avoided.

产品介绍 Product Portfolio



ARDEX P 82
水性合成树脂底涂剂
Water Dispersed Epoxy Primer



ARDEX R 2 PE
无溶剂型环氧树脂底涂剂
Solvent Free Epoxy Primer

产品说明

ARDEX P 82 A组份为淡粉红色，B组份为白色。以1:1配比混合涂布于基面使用，干燥后形成强力接着界面，密度约为1kg/L。

应用范围

ARDEX P 82可用于下列平滑密实基面的界面处理，如：机械镘整压密的混凝土楼板，预制混凝土板、水磨石面、沥青地面、压密板、木板、砂岩、瓷砖、钢板、树脂涂层、油漆等。

仅供室内使用。

技术数据

按照ARDEX严格的质量标准定制；
GISCODE: RE1

包装和储存期

1+1kg组或3+3kg组
未开封室内阴干处约为12个月。

DESCRIPTION

ARDEX P 82 is a two-part water based synthetic dispersion primer and bonding agent. It is non-flammable and non-corrosive. ARDEX P 82 forms a priming/bonding layer on most substrates, particularly smooth or dense surfaces. For interior use in dry/intermittently damp locations.

APPLICATION RANGE

Use on floors that are dry and have an effective damp proof membrane, such as ARDEX DPM. ARDEX P 82 can be used as a primer and bonding agent prior to the application of the ARDEX range of cement-based products.

TECHNICAL DATA

Manufactured strictly according to ARDEX quality standard;
GISCODE: RE1

PACKAGING & SHELF-LIFE

1+1kg/set or 3+3kg/set.
ARDEX P 82 has a shelf life of approximately 12 months if stored in dry conditions in the original unopened packaging.

产品说明

ARDEX R 2 PE为一双组份无溶剂流展型环氧树脂底涂剂。

应用范围

为ARDEX商业地坪系统中特别配制的底涂剂。特别针对特殊基面使用。

技术数据

操作时间: 30分钟@23℃
开放步行: 8-10小时
后续施工间隔: 24小时后

包装和储存期

A组份 环氧树脂 20kg; B组份 固化剂 10kg
在干燥避光的室内储存，温度保持在5-30℃，避免霜冻。未开封状态下保质期约为9个月。

DESCRIPTION

ARDEX R 2 PE Solvent Free Epoxy Primer is a two component non-solvent epoxy resin.

APPLICATION RANGE

ARDEX R 2 PE Solvent Free Epoxy Primer is formulated to be used as a primer prior to the application of ARDEX Self-leveling system. Where surfaces are very porous, more than one coat of ARDEX R 2 PE primer may be required to achieve the desired bonding efficiency.

TACHNICAL DATA

Working time: 30mins at 23℃
Walk ability: 8-10 hours
Ready for floor coating: 24 hours

PACKAGING & SHELF-LIFE

Part A / main component 20kg barrel;
Part B / hardener 10kg jerry can.
Store in dry conditions, avoid sunlight, Epoxy primer has a storage life of not less than 9 months in the original unopened containers.



ARDEX R 3 E 耐潮环氧底涂剂 Solvent Free Epoxy Primer

产品说明

ARDEX R 3 E 为双组份耐潮型无溶剂环氧底涂剂，可用于非持续性轻微潮湿混凝土或水泥砂浆找平层的底涂，在需要浇筑水泥基自流平的环氧上，必须在ARDEX R 3 E 湿的时候满抛一定粒径的干砂作锚固之用。基层经常有持续性的水汽或有压力的水汽时应使用ARDEX DPM防潮膜。

应用范围

为ARDEX商业地坪系统中特别配制的底涂剂。特别针对于基层潮气较高的情况。

技术数据

工作时间： 20分钟@23℃
开放步行： 6-8小时@23℃
面材施工时间： 24小时@23℃

包装和储存期

A组份5.5kg+B组份3.3kg。
未开封室内阴干处约为24个月。

DESCRIPTION

ARDEX R 3 E is a two component solvent free epoxy resin for use on concrete and cementitious surfaces that are damp (e.g. from water spillages or rain) prior to installing ARDEX polyurethane screeds, self-smoothing epoxy floor coatings and cementitious self-levelers.

APPLICATION RANGE

ARDEX R 3 E is a formulated primer to be used prior to the application of ARDEX self-leveling system where the moisture content is higher than requirement.

TECHNICAL DATA

Working time: 20 minutes at 23℃
Walk ability: 6-8 hours at 23℃
ARDEX R 3 E should be allowed to cure prior to the installation of the final floor finish, typically 24 hours at 23℃.

PACKAGING & SHELF-LIFE

Part A 5.5kg + Part B 3.3kg.
Store in dry conditions. ARDEX R 3 E has a storage life of 24 months in the original unopened containers.



产品介绍 Product Portfolio



ARDEX E 70
水泥砂浆增强剂
Bonding Agent

产品说明

ARDEX E 70 水泥砂浆增强剂是一种复合聚合物改性乳液水泥砂浆增强剂，添加于墙地面水泥基找平砂浆，可提高墙地面水泥基找平砂浆的抗折强度和抗压强度，增加柔韧性和粘结性能。促进施工的和易性，而无需额外添加用水量，减少砂浆早期开裂。可用于室内、室外，商业和住宅的地面与墙面。

应用范围

混凝土、墙地面找平砂浆、砖墙、砌块和聚合物乳液改性水泥基防水膜。

技术数据

色泽：白色液体
比重：约1.01g/ml
pH值（酸碱度）：9-11
地暖：可用

包装和储存期

ARDEX E 70 水泥砂浆增强剂使用塑料桶包装，净容量20L。未开封存储于23°C，相对湿度为50%RH的干燥条件下，ARDEX E 70水泥砂浆增强剂的保质期至少为12个月。避免受冻。

DESCRIPTION

ARDEX E 70 is a bonding agent designed to improve shear and tensile bond strength of sand/cement screeds and renders. ARDEX E 70 mixed with screeds and renders can be used for internal and external, commercial and residential applications on both floor and wall.

APPLICATION RANGE

Concrete, renders, screeds, brickwork, blockwork, JC water-proofing membrane.

TECHNICAL DATA

Color: White liquid
Specific gravity: Approx 1.01g/ml
pH: 9-11
Underfloor heating: Yes

PACKAGING & SHELF-LIFE

ARDEX E 70 is packed in plastic pails—net volume 20L. ARDEX E 70 has a shelf life of not less than 12 months when stored in the original unopened packaging, in a dry place at 23°C and 50% relative humidity, Protect from frost.



ARDEX E 25
水泥自流平增强剂
Synthetic Resin Dispersion

产品说明

ARDEX E 25 是一种乳胶状、粉红色合成树脂砂浆增强剂，与 ARDEX地坪材料混合时，能增强地面抗拉强度。

应用范围

适用于高流量区域。

技术数据

混合类型 产品	1:3 稀释 (ARDEX E 25:水)	1:5 稀释 (ARDEX E 25:水)
ARDEX K 31(25kg)	~ 6.5L	~ 6.2L
ARDEX CL 11(25kg)	~ 6.2L	~ 5.9L

说明：

(1) 特殊稀释比例 (ARDEX E 25:水 1:3)
在硬质木材和金属板上施工时或修复楼梯台阶时，需要在 ARDEX K 31或ARDEX CL 11中加入指定比例的ARDEX E 25。

(2) 一般稀释比例 (ARDEX E 25:水 1:5)
在重轮区、高点荷载区或高流量区域、地暖系统、使用了亚地斯防潮层 (ARDEX DPM, ARDEX WPM 300) 和使用ARDEX P 82 作为底涂的环氧涂层的质密的基层、或铺设木地板或橡胶地板前将自流层作为临时垫层时，需要在ARDEX K 31或ARDEX CL 11 中加入指定比例的ARDEX E 25。

包装和储存期

ARDEX E 25为20升桶装包装。避免霜冻和阳光直射。

DESCRIPTION

ARDEX E 25 is a milky, synthetic resin dispersion, when mixed with ARDEX Floor Leveling Products improves tensile strength and resilience.

APPLICATION RANGE

ARDEX E 25 is suitable for high traffic applications.

TECHNICAL DATA

Mixing Type Product	1:3 Dilution (ARDEX E 25:Water)	1:5 Dilution (ARDEX E 25:Water)
ARDEX K 31(25kg)	~ 6.5L	~ 6.2L
ARDEX CL 11(25kg)	~ 6.2L	~ 5.9L

Note:

(1) Special Dilution (1 Part ARDEX E 25 : 3 Parts Water)
Use with ARDEX K 31 and ARDEX CL 11 when applying over rigid timber & metal decking; for repairing stair treads.

(2) General Dilution (1 Part ARDEX E 25 : 5 Parts Water)
Use with ARDEX K 31 and ARDEX CL 11 in heavy wheel, high point-load & very high traffic areas; for floor heating systems; on dense substrates, ARDEX moisture barriers (ARDEX DPM, ARDEX WPM 300) & epoxy coatings primed with ARDEX P 82; if the self-leveler will be used as a temporary wear surface; for subsequent parquet & rubber floor coverings.

PACKAGING & SHELF-LIFE

ARDEX E 25 is supplied in 20L containers. Protect from frost and direct sunlight.

产品介绍 Product Portfolio



ARDEX WPM 256
水性环氧增强和界面剂
Water Based Epoxy Bonding Bridge



ARDEX WPM 300
水性环氧树脂防水防潮膜
Water Based Epoxy Membrane

产品说明

ARDEX WPM 256为双组份水性环氧聚酰胺产品。主要作为新、旧混凝土间的粘结界面剂使用。亦可作为多种材料表层浸封剂使用及不同材质间的界面处理剂，当与水泥基材料混合后可大幅增强粘结性及抗，压强度。不燃、无臭。

1:1配比容易使用。对基材容忍性大。只需清水即可稀释及清洗。

技术数据

	界面剂	修补砂浆	养护剂
涂层数	1	/	1
耗用量m ² /L	7	/	3
桶中待料时间 (25℃)	60mins	/	60mins
干固时间hr	24	24	24
完全养护days	7	7	7
接着强度MPa	5	/	5

注：作为修补砂浆使用前，须先以ARDEX WPM 256拌合后混合液对基层进行大地涂布。

包装和储存期

10L +10L /组

室内干燥处未开封情况下约24个月。

DESCRIPTION

ARDEX WPM 256 is a two component water based epoxy polyamide unpigmented primer, new to old concrete bonding bridge and admixture for cement based materials.

- Non-flammable and negligible odour.
- Convenient equal part-mixing ratio.
- Moisture tolerant.
- Water thinned and clean up.

TECHNICAL DATA

	Bonding Bridge	Repair Mortar	Curing Membrane
No. of coats	1	/	1
Coverage (m ² /L)	7	/	3
Pot life (hrs @ 25° C)	60mins	/	60mins
Hard dry (hrs)	24	24	24
Full cure (days)	7	7	7
Bond strength (MPa)	5	/	5

Note: The Concrete Repair Mortar must be installed over the New to Old Concrete Bonding Bridge wet-in-wet.

PACKAGING & SHELF-LIFE

10L +10L / set.

Store in dry conditions. ARDEX WPM 256 has a storage life of about 24 months in the original unopened containers.

产品说明

ARDEX WPM 300为双剂型水性环氧聚酰胺树脂防潮防水涂覆型材料，符合澳大利亚、新西兰和英国饮用水用料标准：AS/NZ4020.2000 & BS6920。

技术数据

混合后待料时间 (23℃) :	60分钟
混合比例 :	1: 1主剂: 硬化剂体积比
涂层间隔:	2-4小时
完全固化:	7天
用量:	1.5m ² /L

包装和储存期

10L A组份+10L B组份

未开封干燥阴凉处(23℃及50%相对湿度)情况下，保存24个月。

DESCRIPTION

ARDEX WPM 300 is a two component water based epoxy polyamide membrane/barrier coating.

Approved for use with potable(drinking)water, independent testing confirms conformity with the requirements of AS/NZ4020.2000 & BS6920.

TECHNICAL DATA

Pot life (23℃) :	60 mins
Mixing ratio :	1: 1
Recoat time:	2-4 hours
Full cure:	7 days
Coverage:	1.5m ² /L

PACKAGING & SHELF-LIFE

10L(PART A)+10L(PART B)

Can be stored for approximately 24 months in originally sealed packaging in place free from frost.

产品介绍 Product Portfolio



ARDEX DPM 双组份环氧防潮膜 Damp Proof Membrane

产品说明

ARDEX DPM是一种无溶剂、低粘度的双组分环氧树脂。ARDEX DPM在硬化之后会产生一层固有强度高且与适宜的基材间具有卓越粘接强度的薄膜。上述适宜的基材包括非常潮湿的混凝土和水泥。ARDEX DPM在相对湿度高达98%时仍然适用。ARDEX DPM对水、油脂、油、盐的水溶液、稀的无机酸及有机酸、有机液体及溶剂均具有卓越的耐受性。

应用范围

ARDEX DPM是为了抑制混凝土和水泥/砂浆地面中的水分而特别开发的，可在地面形成一层防潮膜。在“边设计，变施工”的施工模式中，ARDEX DPM使对水分敏感的铺地材料/涂料实现提前安装。

技术数据

工作时间: 20分钟 (23°C)
涂布后固化时间: 8小时 (23°C)
可步行时间 (23°C): 6-8小时后

包装和储存期

9kg/组
在干燥的环境中储存。如原始包装未开封，ARDEX DPM的保质期不短于12个月。

DESCRIPTION

ARDEX DPM is a solvent free, low viscosity, two component epoxy resin. After hardening the ARDEX DPM produces a membrane with high inherent strength and excellent bond strength to appropriate substrates including very damp concrete and screeds. ARDEX DPM accommodates hygrometer readings up to 98% RH. ARDEX DPM has excellent resistance to water, grease, oil, aqueous salt solution, dilute mineral & organic acids and organic liquids & solutions.

APPLICATION RANGE

ARDEX DPM has been specifically developed to suppress residual moisture in concrete cement/sand screeded sub-floors and provides a surface damp proof membrane where a damp proof membrane is not present in the floor or it is not effective. ARDEX DPM allows for the early installation of moisture sensitive floor coverings/coatings in fast track building operations.

TECHNICAL DATA

Working time: 20 mins at 23°C
Over coating: 8 hours at 23°C
Walk ability at 23°C: after 6-8 hours

PACKAGING & SHELF-LIFE

9kg/set.
Store in dry conditions. ARDEX DPM has a storage life of not less than 12 months in the original unopened containers.



产品介绍 Product Portfolio



ARDEX CL 11 商用型垫层自流平 Commercial Self-leveling & Smoothing Compound

产品说明

ARDEX CL 11商用水泥基自流平应用于水泥砂浆及混凝土等坚实的基面上，其特殊配方易于操作能轻易快速的整平地面。施工后3-4小时可开放步行，48小时后可继续施工。ARDEX CL 11含高质量合成树脂、特殊水泥及各种不同细度的骨料，加水搅拌后生成高流动度及自愈性佳的砂浆。

应用范围

ARDEX CL 11主要作为各式地板饰面材料安装铺贴前的基面（如混凝土楼板、水泥砂浆层、石质地砖等）整平用。可在完成面铺设PVC，亚麻地材，地毯，橡胶地材或木地板。

技术数据

根据国家标准JC/T985-2005

可工作时间 (23℃) :	> 20分钟
可开放步行时间 (23℃) :	约3-4小时
流动度:	>135mm
拉伸粘结强度:	1.2Mpa
抗压强度:	28天后 约33MPa
抗折强度:	28天后 约7MPa
施工厚度:	2-8mm

包装和储存期

25kg袋装。

置于干燥未拆封的状况下保存，约可储存6个月。

DESCRIPTION

ARDEX CL 11 is a rapid hardening self-leveling compound, walkable after approximately 3-4 hours and ready to receive floor coverings after 48 hours. Grey powder with special cements, high quality synthetic resins, selected fillers and other special additives.

APPLICATION RANGE

Dry, internal, cementitious sub-floors.

Filling, smoothing and leveling of concrete slabs and cementitious screeds prior to application of floor coverings such as vinyl, linoleum, carpet, rubber floor and floating timber floors.

TECHNICAL DATA

In accordance with Chinese National Standard: JC/T985-2005

Work time:	> 20 mins
Walkability:	3-4 hours
Initial flow:	>135 mm
Compressive strength	
After 28 days:	approx. 33 MPa
Flexural strength	
After 28 days:	approx. 7 MPa
Adhesion strength:	approx. 1.2 MPa
Application thickness:	2-8mm

PACKAGING & SHELF-LIFE

25kg multi-layer paper bags.

Store in dry conditions. ARDEX CL 11 has a storage life of about 6 months in the original unopened containers.



ARDEX K 31 高强水泥基垫层自流平 High Strength Self-leveling Underlayment

产品说明

ARDEX K 31是高强水泥基自流平垫层，3小时后可开放步行，24-72小时可铺设表面材料。特种水泥和高品质胶粉混合而成的灰色粉末。

应用范围

适用于室内干燥而且养护完整的水泥砂浆垫层或混凝土楼板上。高强度，适合铺设PVC，亚麻地材，地毯，橡胶地材或木地板。

技术数据

根据中国国家标准JC/T985-2005

流动度 (23℃) :	约20分钟
开放步行时间 (23℃) :	3小时
初始流动度:	> 135mm
抗压强度 28天后:	约40 MPa
抗折强度 28天后:	8 MPa
粘结强度:	1.8 MPa
抗冲击性:	无开裂或脱离底板
施工厚度:	1.5-10mm

包装和储存期

25kg袋装。

置于干燥未拆封的状况下保存，约可储存6个月。

DESCRIPTION

ARDEX K 31 is a high strength self-leveling compound, walkable after approximately 3 hours and typically ready for use after 24-72 hours. Grey powder with special cements, high quality synthetic resins, selected fillers and other special additives.

APPLICATION RANGE

Dry, internal, cementitious sub-floors.

Filling, smoothing and leveling of concrete slabs and cementitious screeds prior to application of resilient floor coverings such as vinyl, rubber floor and parquet.

TECHNICAL DATA

In accordance with Chinese National Standard:JC/T985-2005

Flow time(23℃):	approx. 20 minutes
Walkability(23℃):	3 hours
Flow initial:	>135mm
Compressive strength	
After 28 days:	approx. 40 MPa
Flexural strength	
After 28 days:	8 MPa
Adhesion strength:	1.8 MPa
Impact resistance:	No cracks or de-lamination
Application thickness:	1.5-10mm

PACKAGING & SHELF-LIFE

25kg multi-layer paper bags.

Store in dry conditions. ARDEX K 31 has a storage life of about 6 months in the original unopened containers.

产品介绍 Product Portfolio



ARDEX A 35 快凝早强水泥 Rapid Hardening & Drying Cement



ARDEX A 45 快速修补砂浆 Rapid Hardening & Drying Internal Repair Mortar



产品说明

ARDEX A 35 快凝早强水泥与0-8mm粒径粗沙混合再加水拌合后, 可作为各种水泥砂浆层使用。其成份中含特殊合成树脂使其易于操作, 镟整后约三个小时即可开放步行。

应用范围

室内使用, 和不可用于长期浸水处。

技术数据

操作时间 (23°C):	约1小时	
开放步行 (23°C):	约3小时	
抗压强度:	1:4配比	1:5配比
28天后	45MPa	35MPa
抗折强度:	1:4配比	1:5配比
28天后	7MPa	6MPa
地暖:	可	

包装和储存期

25kg袋装。
干燥未开封情况下, 约6个月。

DESCRIPTION

Manufacture of cement screeds with the special cement ARDEX A 35, which has been improved with synthetic resin and is mixed with sand of grain size 0-8 mm and water to form an earth-moist, soft-moldable screed mortar.

APPLICATION RANGE

ARDEX A 35 cannot be used outdoors or in permanently wet areas.

TECHNICAL DATA

Working time (+23°C):	approx. 1 hour	
Walkability:	approx. 3 hours	
Cured mortar:	mixing ratio 1:4	mixing ratio 1:5
After 28 days	45MPa	35MPa
Tensile bending hardness:	mixing ratio 1:4	mixing ratio 1:5
After 28 days	7MPa	6MPa
Suitable for floorheating:	Yes	

PACKAGING & SHELF-LIFE

25kg bag.
Store in dry conditions. ARDEX A 35 has a storage life of about 6 months in the original unopened containers.

产品说明

ARDEX A 45是一种用于室内修补的早凝快干、抗垂流的特种功能性砂浆。该产品干固很快并能提供您所期望的砂浆强度和硬度。在23°C环境下, 工作时间约15分钟, 1.5小时即可硬化上人行走, 接续进行其它施工。

应用范围

整平和修补室内楼梯踏步、普通砂浆基面、混凝土地面等; 填补墙面、天花板等的孔洞; 修复门窗框架的四周基面; 填补管道周围孔隙; 可镟整坡道, 从坡底薄边可镟整到所需厚度; 可用于墙底弧角或踢脚成形边角圆整修补, 可用于树脂地面。

技术数据

初凝:	约10-15分钟 (23°C)
终凝:	约60分钟 (23°C)
养护后	
抗压强度:	约24MPa (28天后, 23°C)
抗折强度:	约6MPa (28天后, 23°C)
收缩:	<0.1%

包装和储存期

25kg袋装。
未开封储存于室内阴干处约6个月。

DESCRIPTION

ARDEX A 45 is a rapid setting and drying, slump-free mortar for internal repairs. The mortar dries and hardens rapidly to give a repair of exceptional strength and hardness. The mixed mortar sets after approximately 15 minutes and can be trafficked after 1.5 hours at 23°C.

APPLICATION RANGE

ARDEX A 45 is ideal for: repairing and refracting internal concrete stair treads and risers, cement/sand screeds, concrete floors etc; making good around door and window frames, around pipe work etc; forming ramps from feather edge to normal screed thicknesses; forming coves etc, prior to applying in-situ resin floorings. A suitable covering/coating is required if used as a wear surface.

TECHNICAL DATA

Working time:	approx. 10-15 minutes at 23°C
Cured mortar	
Compressive strength:	approx. 24MPa (after 28 days, 23°C)
Flexural strength:	approx. 6MPa (after 28 days, 23°C)
Shrinkage:	<0.1%

PACKAGING & SHELF-LIFE

25kg multi-layer paper bags incorporating a poly liner.
ARDEX A 45 has a shelf life of approximately 6 months if stored in dry conditions in the original unopened packaging.

产品介绍 Product Portfolio



ARDEX AF 160 U PVC地材地板胶 General PVC Flooring Adhesive

产品说明

ARDEX AF 160 U是一种水性、低异味、无溶剂、丙烯酸乳液型地板胶粘剂。由高质量的乳液、矿物填料和水组成。

ARDEX AF 160 U具有较长的粘结时间，高强的初始粘结力和持久的粘结效果，干燥后无任何异味。

应用范围

各式PVC聚氯乙烯基地地板材、各式CV氯乙烯基地地板材、石英乙烯片材、背面是织物材质的铺地织物材料、背面是胶乳、PVC或PUR泡沫的铺地织物材料。适用于吸水及不吸水的基层。仅供室内使用。

技术数据

开放/干燥时间:	最多40分钟，取决于室内温度、湿度和基层的吸收情况
开始承载:	24-48小时@23°C
完全开放步行:	3天@23°C
是否适合地热:	是
耐滚轮:	可

包装和储存期

25kg桶装。

ARDEX AF 160 U应储放在室内阴凉干燥处，避免阳光照射及冬季注意防冻。最佳储存温度在5-30°C间，未开封可保存约12个月。

DESCRIPTION

ARDEX AF 160 U is a water-based, low odour, solvent free, acrylic emulsion-based flooring adhesive containing a blend of high quality emulsions, mineral fillers and water.

ARDEX AF 160 U has a long tack time, with very good early and long term adhesive strength and is odourless when dry.

APPLICATION RANGE

- PVC coverings
- CV coverings
- Quartz vinyl tiles
- Textile floor-coverings with textile backing
- Textile floor-coverings with latex, PVC or PUR foam backing on porous and non-porous substrates inside.

TECHNICAL DATA

Load bearing:	24-48 hours @23°C
Open to traffic:	3 days @23°C
Open/drying time up to 40 minutes depending on room temperature/humidity and absorbency of the sub-floor	
Suitable for underfloor heating:	Yes

PACKAGING & SHELF-LIFE

25kg/bucket.

ARDEX AF160 U has a shelf life of not less than 12 months, if stored in good conditions between 5°C and 30°C in the original unopened containers.



ARDEX AF 2510 双组份聚氨酯地板胶 Two Component Polyurethane Flooring Adhesive

产品说明

ARDEX AF 2510是一种双组份聚氨酯地板胶。胶粘剂干燥后防水、耐水，且由于其低放射性配方，即使粘贴超薄PVC地材也不会起泡。ARDEX AF 2510细腻、柔顺，不论是使用小或大刮齿都能轻易施工。

应用范围

可用于粘贴PVC板材或卷材、橡胶及硬木等地坪面饰材。

技术数据

施工温度:	15°C以上
刮胶后等待(晾置)时间:	无
桶中待料时间:	45-60分钟
操作时间:	最长 70分钟
开放步行:	4-6小时后 @23°C
完全固化:	7天 @23°C
是否适合地热:	是
室外使用:	可

包装和储存期

12kg/组 桶装。

ARDEX AF 2510应储放在室内阴凉干燥处，避免阳光照射及冬季注意防冻。最佳储存温度在5-30°C间，未开封可保存12个月。

DESCRIPTION

ARDEX AF 2510 is a two part polyurethane flooring adhesive for fixing PVC, Ployolefins (planks and tile), rubber and hardwood floorcoverings. It is water resistant when fully cured and is virtually emission free enabling thin PVC floor coverings to be installed without bubbling. ARDEX AF 2510 is smooth and easy to trowel with small or large notched trowels for PVC and large format hardwood boards.

APPLICATION RANGE

Can be used for decorative flooring materials such as PVC, rubber and hardwood.

TECHNICAL DATA

Working temperature:	Not below 15°C
Flash-off time:	None
Pot life:	45-60 minutes
Laying time:	Up to 70 minutes
Light foot traffic:	4-6 hours @23°C
Full cure:	7 days @23°C
Suitable for underfloor heating:	Yes
For exterior use:	Yes

PACKAGING & SHELF-LIFE

Net volume 12kg/unit

ARDEX AF 2510 has a shelf life of not less than 12 months, if stored in good conditions between 5°C and 30°C in the original unopened containers.



ARDEX AF 380 橡胶地材地板胶 Adhesive for Rubber Floorcoverings

产品说明

ARDEX AF 380为水性、低异味、无溶剂的橡胶地板胶粘剂。由高质量的乳液、矿物填料等组成。具有较长的粘结时间，高强的初始粘结力和持久的粘结效果，干燥后无任何异味。

ARDEX AF 380仅限室内使用。

应用范围

ARDEX AF 380可用于下层为整平后混凝土、砂浆水泥流平及水磨石等的橡胶地板铺设。

技术数据

用量：约250–300g/m²（A2齿形刮刀）
工作时间：约15–20分钟，与室内温湿度、刮刀齿形及下层吸收能力有关
开始承载：约24小时@23℃
完全开放时间：约72小时@23℃
工作温度：15–30℃

包装和储存期

25kg桶装。
12个月。

DESCRIPTION

ARDEX AF 380 is a water-based, low odour, solvent free, rubber floorcovering adhesive containing a blend of high quality dispersions and a low filler content. It has very good early and long term adhesive strength and is odourless when dry.

Interior use only.

APPLICATION RANGE

ARDEX AF 380 can be used under rubber flooring on substrates such as the leveled concrete, cement mortar leveling and terrazzo etc.

TECHNICAL DATA

Coverage: Approx 250–300g/m²(A2 notched trowel)
Working time: Approx 15–20 minutes, depended on the internal temperature and moisture, notched trowel, the absorption of underlayment.
Load bearing: Approx 24 hours @23℃
Open to traffic: Approx 72 hours @23℃
Work temperature: 15–30℃

PACKAGING & SHELF-LIFE

25kg bag.
12 months.



产品介绍 Product Portfolio



ARDEX AF 778 多用途地毯及亚麻地材地板胶 Universal Flooring Adhesive For Carpet And Linoleum

产品说明

ARDEX AF 778是一种无溶剂、低异味，适用于铺设大面积PVC、油毡和纺织品的万能地板胶。

应用范围

分散胶粘剂适用于：均匀和多层PVC片材、瓷砖、用于木板和瓷砖的PVC面材，CV、乙烯基和油毡地板面材，背面有纹路的纺织面材，乳胶泡沫或背面有乳胶的，机织纺织品，乙烯基瓷砖，在可吸收内部基层上有或没有支持设备的剑麻覆盖面层。

技术数据

温度：不低于15℃
大气相对湿度(RH)：不高于75%
挥发时间：不超过15分钟
铺设时间：最多30分钟
开始承载：约24小时@23℃
完全开放：48-72小时@23℃
较低的温度和较高的相对湿度会延长时间，并会导致潮气产生。
上文建议的时间是基于23℃，50%RH的情况。
清洗剂：干燥前可用水清洗
是否适用地暖：是 是否适用洗发水和喷雾剂：是

包装和储存期

25公斤/桶
在阴干无霜冻处，约可储存12个月。

DESCRIPTION

ARDEX AF 778 is a solvent-free, low odour, universal adhesive flooring adhesive for PVC, linoleum and textile coverings in large areas.

APPLICATION RANGE

Dispersion based adhesive for bonding of: homogeneous and multi-layer PVC sheets and tiles; PVC-Design floor coverings in planks and tiles; CV; vinyl and linoleum floor coverings; textile coverings with textile back; latex-foam or latex backed; woven textiles; vinyl tiles; cocos and sisal coverings with or without backing equipment; on top of absorbent internal substrates.

TECHNICAL DATA

Temperature: Not below 15℃
Relative atmospheric humidity (RH): Not above 75%
Flash off time: Up to 15 minutes
Laying time: Up to 30 minutes
Load bearing: Approx 24 hours @23℃
Open to traffic: Approx 48-72 hours @23℃
Lower temperatures and higher RH will prolong the times and can lead to oisture inclusions. The times indicated are based on 23℃ and 50% RH
cleaning agent: clean with water before drying
Suitable for ubffloorheating: Yes
Suitable for shampoos and sprays: Yes

PACKAGING & SHELF-LIFE

25kg/bucket
Store in cool places but free of frost. Can be stored in the original sealed pails for approx 12 months.



ARDEX AF 961 环保压敏地板胶 Pressure Sensitive Flooring Adhesive

产品说明

ARDEX AF 961是一种水性丙烯酸压敏粘剂，室内使用，不含有害溶剂。

技术数据

类型：水性丙烯酸型
颜色：米白色 - 干燥后呈半透明状
产品特征：无溶剂、不燃、低VOC、无邻苯二甲酸化合物
初凝时间：约30-60分钟
工作时间：24小时
桶中待料时间：用完即封可再次使用
现场可变性：现场条件，包括基层的孔性、温度和湿度等将影响本品的覆盖率、初凝时间和工作时间
开始步行：立即

包装和储存期

20kg/桶。
避免冻融及阳光直射,未开封于干燥阴凉环境下12个月。

DESCRIPTION

ARDEX AF 961 is a water-based, acrylic, pressure sensitive adhesive which contains no hazardous solvents.

TECHNICAL DATA

Base: Water-based, acrylic
Colour: Light beige - translucent when dry in thin layer
Next Generation: Solvent-free, non-flammable, low VOC, Phthalate Free
Set-Up Time: Approx 30 - 60 minutes
Working time: 24 Hours
Pot Life: Unlimited, re-seal bucket
Site Variability: Site conditions such as substrate porosity, temperature & humidity will alter coverage, set-up time tack and working time
Open to traffic: Immediately

PACKAGING & SHELF-LIFE

20 Litre plastic pail containing 20kg of adhesive.
One year from date of manufacture in unopened container.
Protect from freezing and direct sunlight.



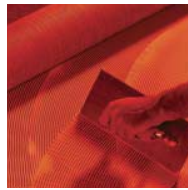
A series of 20 horizontal black lines that serve as a writing template, spaced evenly down the page.



**Floor Levelling Compounds/
Repair Mortars**
自流平/修补砂浆



Waterproof Coatings
防水, 防潮



Floorcovering Adhesives
地材粘结剂



Resin Flooring
树脂地坪



Fast Leveling Screeds
快速找平砂浆



Renderers
饰面砂浆



Tile Adhesives
瓷砖粘结剂



Primer, DPM
底涂剂, 防潮膜



Tile Grouts
填缝剂

ARDEX WORLDWIDE



亚地斯建材(上海)有限公司
ARDEX (SHANGHAI) CO., LTD.
上海市中山南路505号13号楼3楼
Tel: +86-21-6152-6722
Fax: +86-21-6152-6726
E-mail: info@ardexchina.com
www.ardexchina.com

- 香港 Hong Kong
- 北京 Beijing
- 广州 Guangzhou
- 成都 Chengdu



www.ardex.com

2013.10/3000

产品型录及公司员工或代理商、经销商所提供的产品资料, 皆是根据我们以往丰富的
实务经验, 诚挚地为客户解决工程问题。公司本着持续研发的一贯目标, 在任何时刻
我们将保有权利更新产品最新资料。我们也保证持续提供高品质的产品。然而, 因本
公司无法掌控工地现场或施工操作, 故不承担由此造成的任何损失或损坏的相关责任。