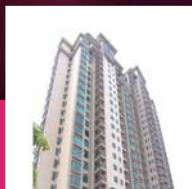


**石材/瓷砖  
粘贴系统**

**Natural Stone/  
Tile Installation  
System**



**天然石材/瓷砖粘贴系统**

**Natural Stone/Tile Adhesive**

**防水系统**

**Waterproofing**

**砂浆系统**

**Mortar**

**瓷砖填缝剂系统**

**Tile Grout**

**界面剂**

**Primer**



**SYSTEMARDEX**  
PREMIUM PERFORMANCE



德国亚地斯



## 公司介绍

### Company Introduction

1949年，亚地斯（ARDEX）成立于德国维藤市，是一家全球性的跨国公司。60多年来，亚地斯一直专注于干粉砂浆行业，是整个行业中的技术领导者，提供优质且可靠的化学建材。

亚地斯建材（上海）有限公司成立于2002年，为国内先进的特殊化学建材生产商，其产品包括：瓷砖粘结系统、防水系统、地坪系统、创意饰面系统等，总部和工厂位于上海，在北京、广州、成都分别设有办事处。

In 1949, as a global multinational company, ARDEX was founded in Witten, Germany. For over 60 years, ARDEX has been the technology leader for the entire mortar industry, providing quality and reliable chemical building materials.

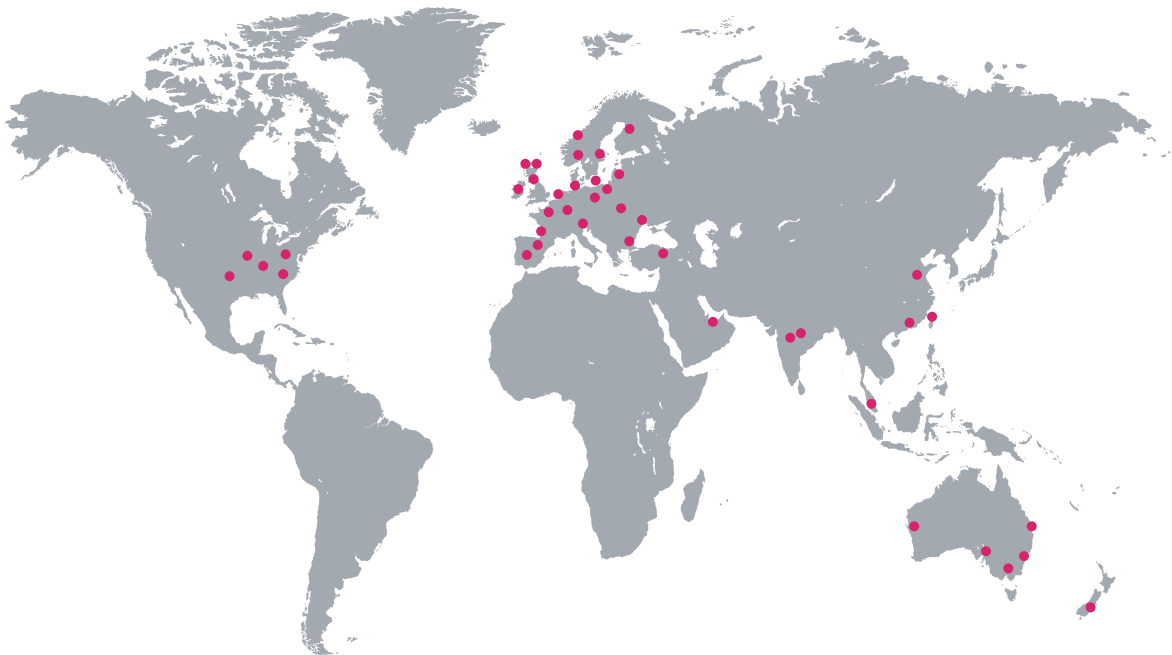
Established in 2002, ARDEX (Shanghai) Co., Ltd. is a leading chemical building material manufacturer in China, its product range includes tile adhesives, waterproofing, flooring, creative surface design system, etc. ARDEX is committed to develop China market and has set up factories, offices and branches in Shanghai, Beijing, Guangzhou and Chengdu.

## 亚地斯全球

### ARDEX Group

亚地斯集团在全球拥有47家集团公司，遍及各大洲的50多个国家。

ARDEX Group has 47 group companies in the world, covering more than 50 countries.





## 创新特质

### Innovation DNA

突破创新是亚地斯一贯的传承

- ARDEX是世界上最早发明水泥基自流平的企业；
- 创新产品每年占总销售额的25%以上；
- 2005年，荣获德国100大创新企业。

It's always ARDEX tradition to breakthrough innovation

- ARDEX is the inventor of Cement-based Self-leveling.
- Innovative products contribute over 25% of annual sales.
- In 2005, awarded Top 100 Innovative Company in Germany.

## 核心科技

### Core Technology

本地研发技术结合全球科技

- 1953年，发明了水泥自流平，开创了建筑地面材料的新纪元；
- 1975年，发明“早强快干”技术，全球首创；
- 2006年，发明“超微科技”，全球首创；
- 2015年，ARDEX“ULTRA-SHIELD博盾防护”技术首登中国。

Local research and technology combined with global knowledge

- 1953, invented self-leveling cement, which created a new era of flooring material;
- 1975, invented ARDURAPID, unique in the world;
- 2006, invented MICROTEC, unique in the world;
- 2015, ULTRA-SHIELD was introduced in China.

## 技术全面

### Integrity Technology

做世界领先的高品质特殊建筑领域的方案提供者

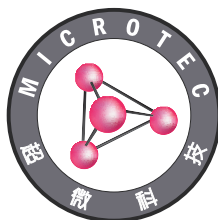
- 从基层到饰面，完整的产品系统体系；
- 从新建到维修，更快更好更环保；
- 从国内到国际，众多的顶级案例。

To be one of the world's leading solution providers of high performance specialty building materials

- Whole system solutions.
- Faster, better and more environmentally friendly.
- Lots of top references around the world.



德国“100大创新企业”  
Awarded Top 100 Innovative Company in Germany





上海港汇广场  
Shanghai Grand Gateway



上海东方明珠  
Shanghai Oriental Pearl Tower



北京银泰酒店  
Beijing Yintai Centre



北京CCTV  
Beijing CCTV



世茂滨江花园  
Shimao Binjiang Garden



中信泰富  
Citic Pacific



汇丰大厦  
HSBC Building



上海金茂大厦  
Shanghai Jinmao Tower

奥林匹克花园  
Beijing Olympic Garden

柏瑞大酒店  
Park Hyatt Hotel

北京地铁  
Beijing Metro

北京万贸购物广场  
Beijing One Mall Shopping Center

上海扬子饭店  
Yangtze Langham Hotel

衡山宾馆  
Hengshan Hotel

无锡宜家  
Wuxi IKEA

杭州西溪湿地  
Hangzhou Xixi Wetland

世博中心  
Shanghai Expo Center

苏州惠氏制药  
Wyeth Suzhou

保时捷展厅  
Porsche Showroom

世博洲际酒店  
Intercontinental Hotels & Resorts

博洛尼上海  
Shanghai Boloni

南京华为  
Nanjing Huawei

昆山恩斯克  
Kunshan NSK

世博中国馆  
China Pavilion Shanghai Expo

杭州奥迪4S店  
Hangzhou AUDI 4S Store

南京地铁  
Nanjing Metro

水立方  
Water Cubic

世博会奥地利馆  
Austria Pavilion Shanghai Expo

成都来福士  
Chengdu Raffles

沈阳宜家  
Shenyang IKEA

北京华为  
Beijing Huawei

银杏湖高尔夫球村  
Gingkolake International Golf

## 砌筑砂浆空鼓/开裂

### Debonding & cracking of masonry mortar



- 砂浆保水性差
- 收缩率高
- 粘结力差
- Poor water-retention property
- High shrinkage rate
- Low adhesion

## 找平砂浆开裂

### Crack of leveling mortar



- 砂浆保水性差
- 收缩率高
- Poor water-retention property
- High shrinkage rate

## 找平砂浆空鼓/脱落

### Hollowing & debonding of leveling mortar



- 砂浆保水性差
- 粘接力低
- 甩浆拉毛工艺粘接力低
- Poor water-retention property
- Low adhesion
- Traditional roughing treatment has poor adhesion

## 窗台渗水

### Leakage of window sill



- 窗台边角处应力集中，容易开裂
- The stress is concentrated in the corner area of the window and it's easy to crack

## 防水材料脱落

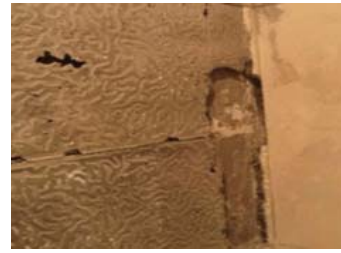
### Debonding of waterproofing material



- 劣质乳液或乳液固含量过低导致粘接强度低
- Latex of bad quality or low solid content leads to poor adhesion

## 防水基面上瓷砖脱落

### Tile debonding from waterproofing layer



- JS防水层表面致密，普通瓷砖胶没有聚合物，无法渗入防水层，导致粘接失败
- The surface of JS waterproofing layer is of very low water absorption and therefore traditional adhesive can not bond well

## 内墙玻化砖脱落

### Debonding off of interior vitrified tiles



- 普通瓷砖胶没有聚合物，粘结强度低，无法粘贴玻化砖（吸水率 < 0.3%）
- Due to extreme low water absorption (less than 0.3%), the mechanical anchoring of traditional tile adhesives doesn't work

## 外墙石材脱落

### Debonding of exterior tile



- 水泥砂浆粘接强度低、柔性差，无法抵御温差和干湿循环
- 水泥砂浆自身收缩率高，容易导致空鼓、脱落
- Traditional mortar has low adhesion and flexibility, difficult to withstand temperature and humidity cycles
- Traditional mortar has high shrinkage rate

## 大力环氧胶失败

### Failure of epoxy adhesive



- 大力环氧胶点粘，加上自身脆性大，不能抵御石材收缩、变形，导致剥落
- Although epoxy adhesive has very good adhesion, it's rigid and usually spot bonded which makes it difficult to resist the deformation of tile

## 天然石材开裂

### Crack of natural stone



- 水泥砂浆柔性差，自身收缩率高，无法抵御基层变形
- Poor flexibility and high shrinkage of mortar, cannot resist substrate deformation

## 石材透底

### Discoloration of natural stone



- 天然石材毛细孔多、吸水率高，瓷砖胶渗入，造成透底
- Mixing water (tile adhesive) can easily penetrate the natural stone due to high porosity.

## 石材变色

### Discoloration (framing) of natural stone



- 天然石材吸水率高，水渗入，造成石材变色
- Water goes through grout and stone which leads to framing discoloration

## 人造石材空鼓/翘边

### Hollowing & Warping of artificial stone



- 水泥砂浆柔性差，粘接强度低
- 人造石材膨胀系数大、易变形
- Traditional mortar has low flexibility and adhesion
- Artificial stone is easy to expand and deform

## 外墙泛碱

### Efflorescence on exterior wall



- 水泥砂浆填缝，吸水率高，雨水渗入，造成泛碱
- The Grout can easily absorb water and rain

## · Tile Adhesive 瓷砖粘结剂系列



**ARDEX X 22**  
优质型瓷砖胶粘剂



**ARDEX X 24**  
专业型瓷砖胶粘剂



**ARDEX X 26**  
强力型瓷砖胶粘剂



**ARDEX X 28**  
超级快凝型瓷砖胶粘剂



**ARDEX X 77**  
纤维增强型瓷砖胶粘剂



**ARDEX S 16**  
超级快干型瓷砖胶粘剂

## · Tile Grout 瓷砖填缝剂系列



**ARDEX FG 3**  
宽缝填缝剂



**ARDEX FG 4**  
细缝填缝剂



**ARDEX EG 2**  
环氧填缝剂



**ARDEX EG 3**  
超强环氧填缝剂

## · Additive 增强剂



**ARDEX E 30**  
全能砂浆增强剂



**ARDEX E 50**  
填缝添加剂

· Waterproofing 防水系列



ARDEX WPM 006(I)  
超弹防水涂料



ARDEX WPM 006(II)  
高柔防水涂料



ARDEX WPM 006(III)  
柔性防水涂料



ARDEX WPS 18  
高强型柔性防水涂料



ARDEX WPM 256  
水性环氧树脂增强剂&界面剂



ARDEX WPM 300  
水性环氧树脂防水膜



ARDEX 8+9  
快干型超弹防水涂料



ARDEX WP Tape  
防水专用胶带

· Mortar 砂浆系列



ARDEX B 55  
聚合物改性墙面找平砂浆



ARDEX A 35  
快干早强水泥



ARDEX A 45  
快速修补砂浆



ARDEX A 50  
全能型快速修补砂浆

· Primer 界面剂系列



ARDEX P 20  
粉末型界面剂



ARDEX P 60  
多用途界面剂



ARDEX P 82  
双组份合成树脂底涂剂



ARDEX P 51  
界面剂



---

**系统 1：各种不同基层的基面处理**

**System 1: Substrate Preparation**

---

**系统 2：劈开砖、文化石粘结系统**

**System 2: Cleaving Tile & Culture Stone Installation**

---

**系统 3：玻化砖、重砖粘结系统**

**System 3: Vitrified Tiles & Heavy Tiles Installation**

---

**系统 4：人造石粘结系统**

**System 4: Artificial Stone Installation**

---

**系统 5：天然石材粘结系统**

**System 5: Natural Stone Installation**

---

**系统 6：地暖粘结系统**

**System 6: Floor Heating System Tile Installation**

---

**系统 7：外保温粘结系统**

**System 7: EIFS Installation**

---

**系统 8：卫生间粘结系统**

**System 8: Bathroom Tile Installation**

---

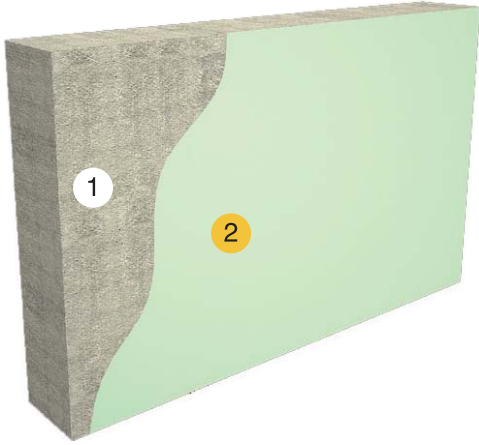
**系统 9：泳池粘结系统**

**System 9: Swimming Pool Tile Installation**

---

## 系统1：各种不同基层的基面处理 System No.1: Substrate Preparation

### 基面处理1：混凝土、加气砌块基面处理 No.1: Substrate Preparation On Concrete & Block



1	基层	混凝土、加气块、多孔砖等
2	界面层	ARDEX P 20 ARDEX P 60

② 界面层

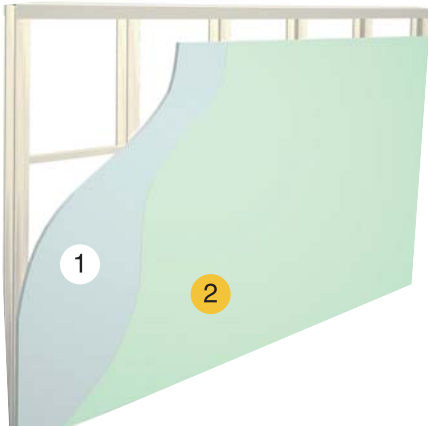


ARDEX P 20  
粉末型界面剂（干粉）



ARDEX P 60  
多用途界面剂（液体）

### 基面处理2：石膏板、水泥纤维板基面处理 No.2: Substrate Preparation On Gypsum Board & Cement Board



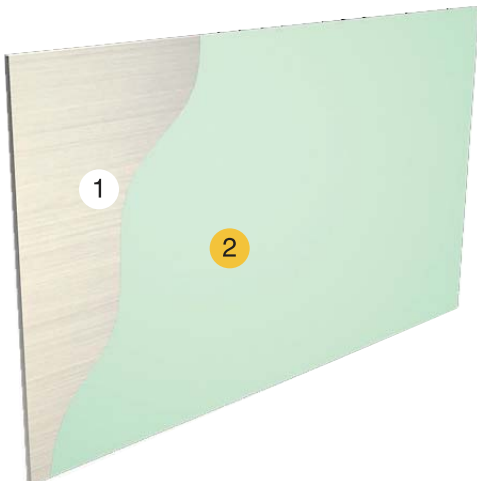
1	基层	石膏板、纤维板、木板等
2	界面层	ARDEX P 60

② 界面层



ARDEX P 60  
多用途界面剂（液体）

### 基面处理3：钢板基面处理 No.3: Substrate Preparation On Steel Board



1	基层	钢板、玻璃、釉面砖等
2	界面层	ARDEX P 82

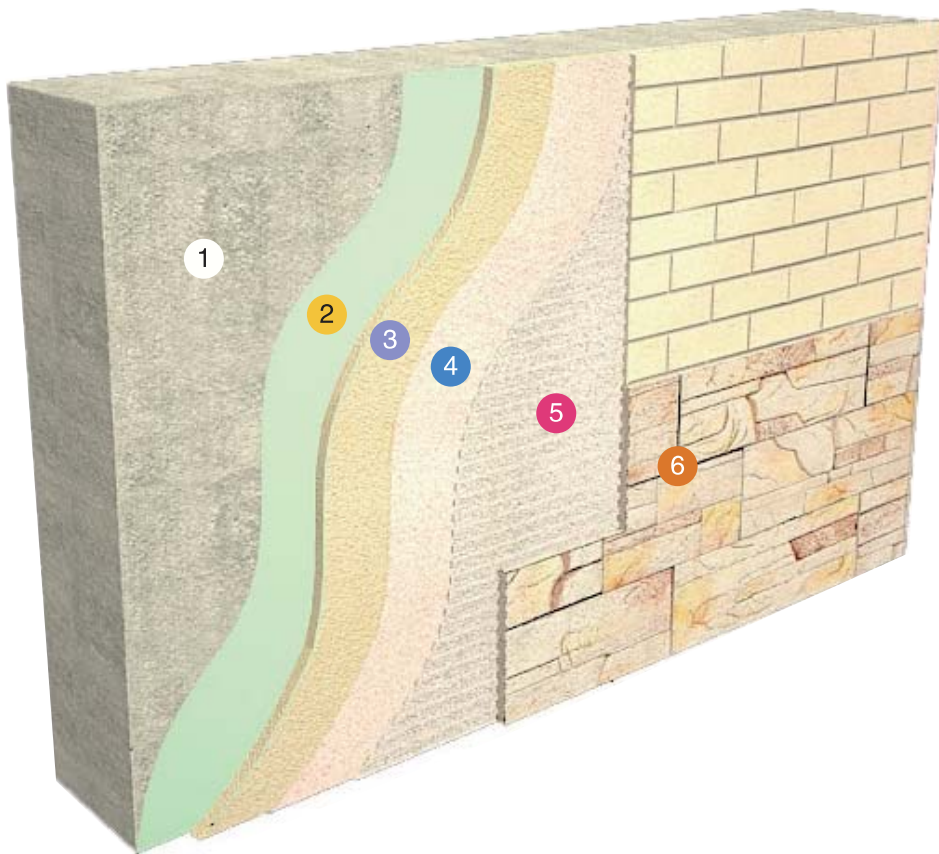
② 界面层



ARDEX P 82  
环氧型界面剂

## 系统2：劈开砖、文化石粘结系统

### System No.2: Cleaving Tile & Culture Stone Installation



1 基层	参见“基面处理”	4 抗渗层	ARDEX X 22+WPM 006乳液
2 界面层	参见“基面处理”	5 粘结层	ARDEX X 22
3 找平层	ARDEX B 55 ARDEX E 30	6 填缝层	ARDEX FG 3

#### ② 界面层



ARDEX P 20  
粉末型界面剂（干粉）



ARDEX P 60  
多用途界面剂（液体）



ARDEX P 82  
环氧型界面剂

#### ③ 找平层



ARDEX B 55  
找平砂浆



ARDEX E 30  
砂浆增强剂

#### ④ 抗渗层



+



ARDEX X 22+WPM 006  
优质型瓷砖胶粘剂+防水乳液

#### ⑤ 粘结层



ARDEX X 22  
优质型瓷砖胶粘剂

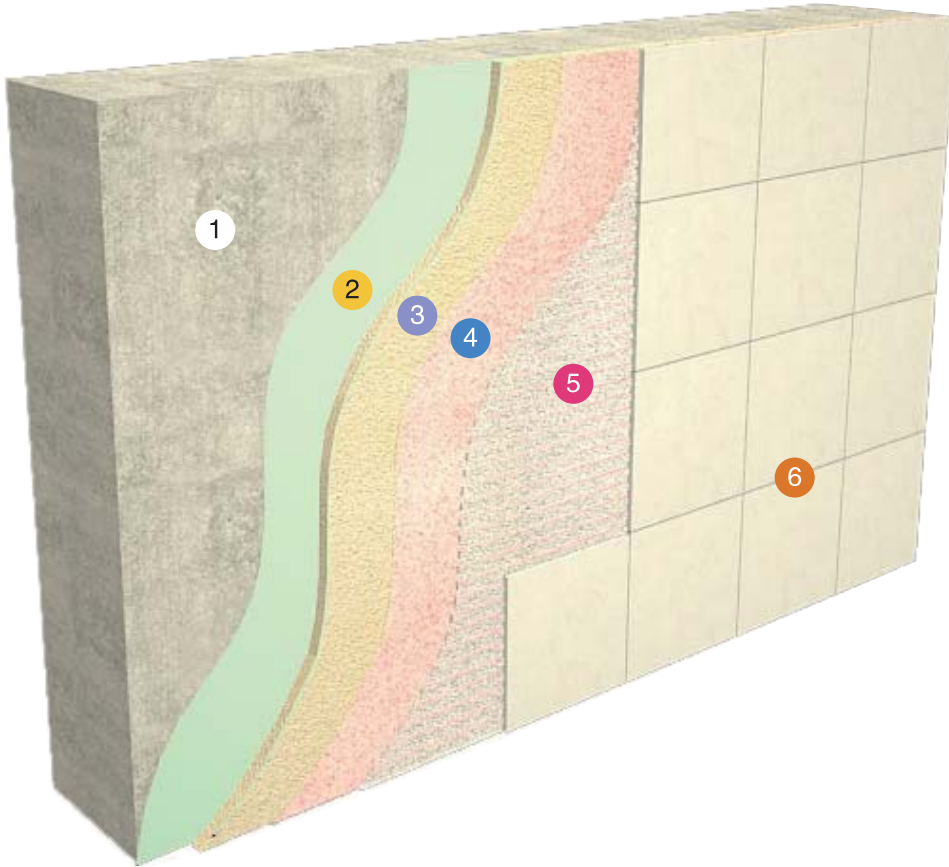
#### ⑥ 填缝层



ARDEX FG 3  
宽缝填缝剂

## 系统3：玻化砖、重砖粘结系统

### System No.3: Vitrified Tile & Heavy Tile Installation



① 基层	参见“基面处理”	④ 抗渗层	ARDEX X 22+WPM 006乳液
② 界面层	参见“基面处理”	⑤ 粘结层	ARDEX X 24 ARDEX X 26
③ 找平层	ARDEX B 55 ARDEX E 30	⑥ 填缝层	ARDEX FG 3 ARDEX FG 4

#### ② 界面层



ARDEX P 20  
粉末型界面剂（干粉）



ARDEX P 60  
多用途界面剂（液体）



ARDEX P 82  
环氧型界面剂

#### ③ 找平层



ARDEX B 55  
找平砂浆



ARDEX E 30  
砂浆增强剂

#### ④ 抗渗层



ARDEX X 22+WPM 006  
优质型瓷砖胶粘剂+防水乳液

#### ⑤ 粘结层



ARDEX X 24  
专业型瓷砖胶粘剂



ARDEX X 26  
强力型瓷砖胶粘剂

#### ⑥ 填缝层

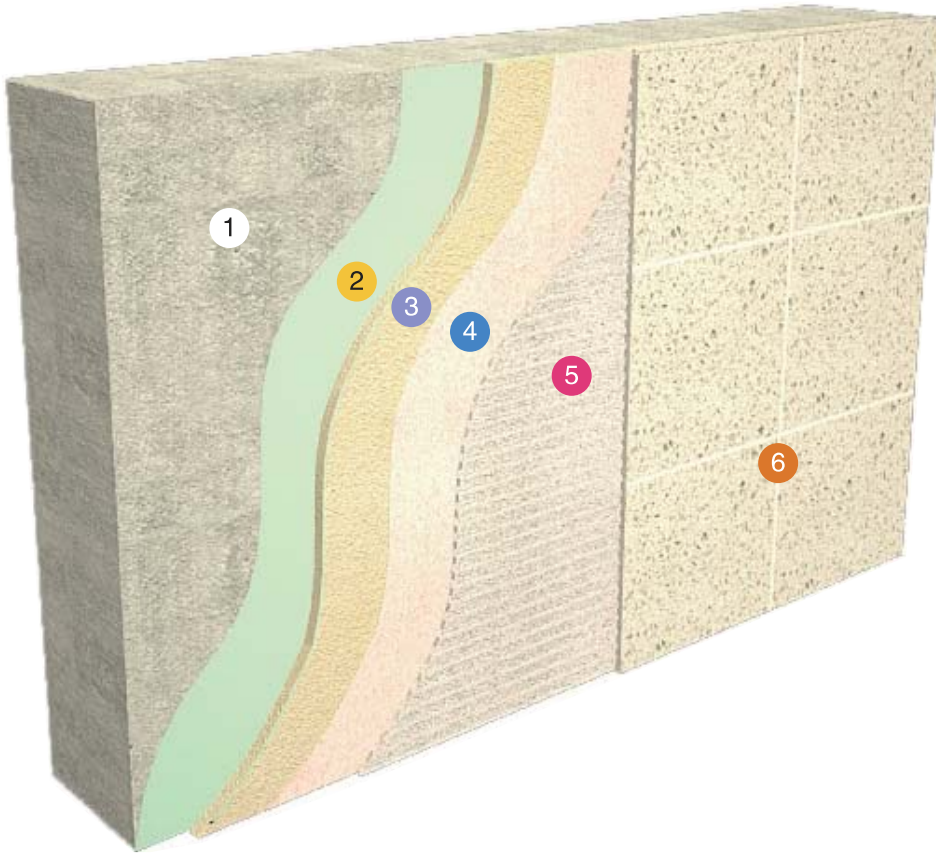


ARDEX FG 3  
宽缝填缝剂



ARDEX FG 4  
细缝填缝剂

## 系统4：人造石粘结系统 System No.4: Artificial Stone Installation



1 基层	参见“基面处理”	4 抗渗层	ARDEX X 22+WPM 006乳液
2 界面层	参见“基面处理”	5 粘结层	ARDEX X 26 ARDEX X 28
3 找平层	ARDEX A 35 ARDEX B 55 ARDEX E 30	6 填缝层	ARDEX FG 3+E 50/E30 ARDEX FG 4+E 50/E30

### ② 界面层



ARDEX P 20  
粉末型界面剂 (干粉)



ARDEX P 60  
多用途界面剂 (液体)



ARDEX P 82  
环氧型界面剂

### ③ 找平层



ARDEX A 35  
快干早强水泥  
(地面找平)



ARDEX B 55  
找平砂浆



ARDEX E 30  
砂浆增强剂

### ④ 抗渗层



+



ARDEX X 22+WPM 006  
优质型瓷砖胶剂+防水乳液

### ⑤ 粘结层



ARDEX X 26  
强力型瓷砖胶剂



ARDEX X 28  
超级快凝型瓷砖胶剂

### ⑥ 填缝层



+



ARDEX FG 3+E 50  
宽缝填缝剂+填缝添加剂

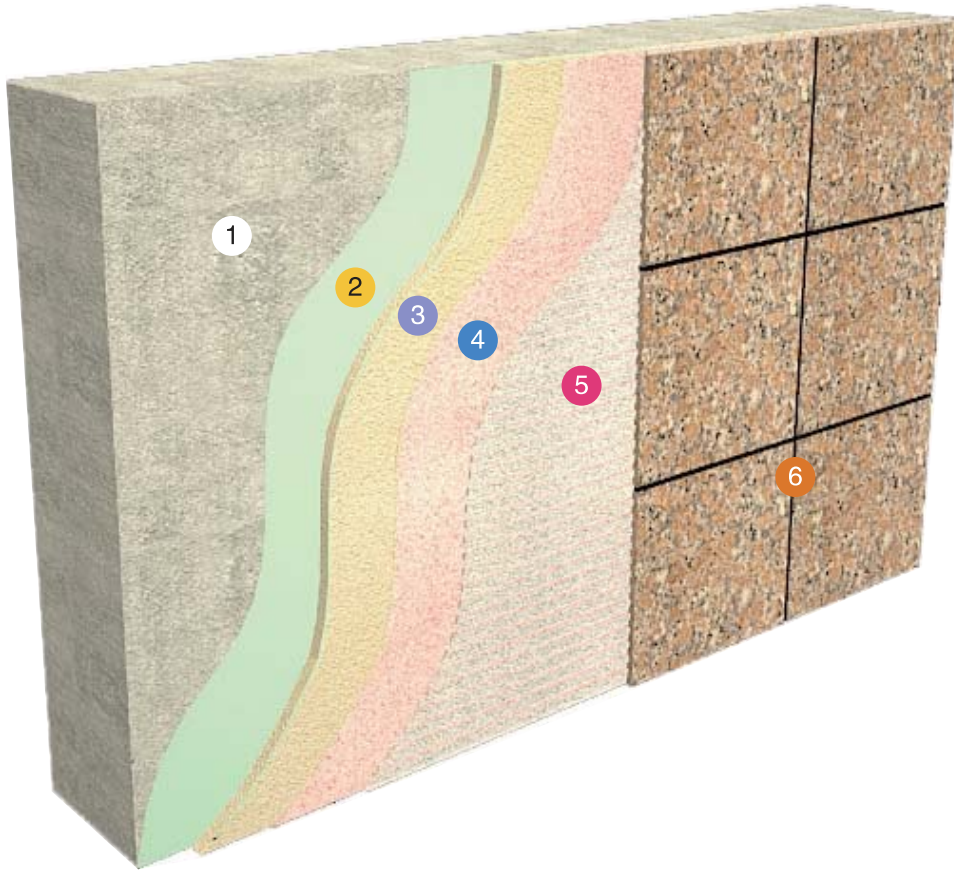


+



ARDEX FG 4+E 50  
细缝填缝剂+填缝添加剂

## 系统5：天然石材粘结系统 System No.5: Natural Stone Installation



1 基层	参见“基面处理”	4 抗渗层	ARDEX X 22+WPM 006乳液
2 界面层	参见“基面处理”	5 粘结层	ARDEX X 26 ARDEX X 28 ARDEX S 16
3 找平层	ARDEX A 35 ARDEX B 55 ARDEX E 30	6 填缝层	ARDEX FG 3 ARDEX FG 4

### ② 界面层



ARDEX P 20  
粉末型界面剂 (干粉)



ARDEX P 60  
多用途界面剂 (液体)



ARDEX P 82  
环氧型界面剂

### ③ 找平层



ARDEX A 35  
快干早强水泥  
(地面找平)



ARDEX B 55  
找平砂浆



ARDEX E 30  
砂浆增强剂

### ④ 抗渗层



+



ARDEX X 22+WPM 006  
优质型瓷砖胶粘剂+防水乳液

### ⑤ 粘结层



ARDEX X 26  
强力型瓷砖胶粘剂



ARDEX X 28  
超级快凝型瓷砖胶粘剂



ARDEX S 16  
超级快干型瓷砖胶粘剂

### ⑥ 填缝层

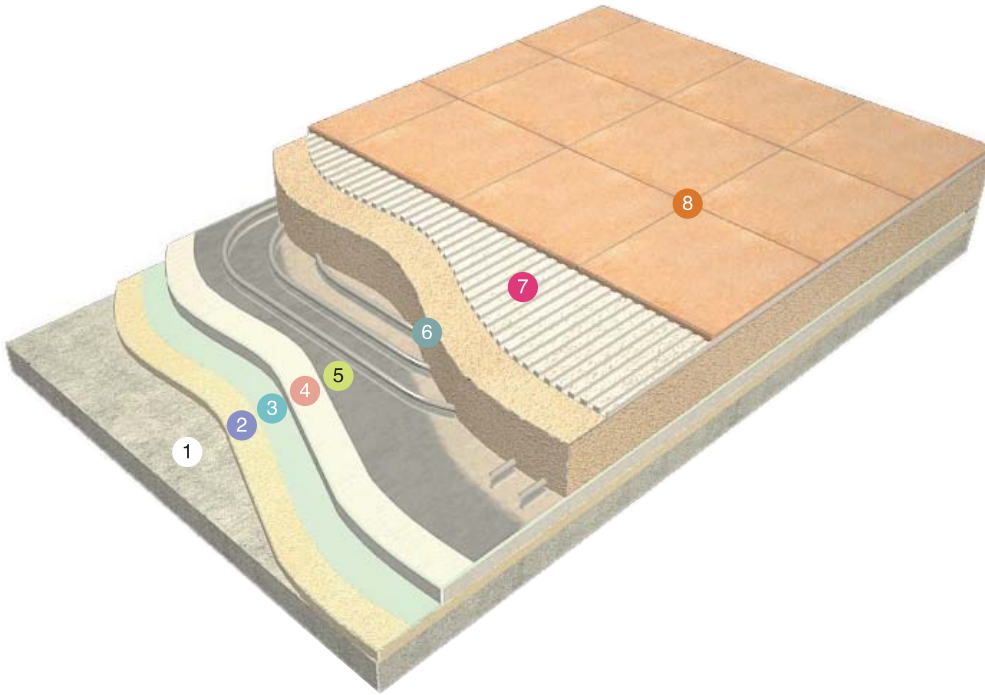


ARDEX FG 3  
宽缝填缝剂



ARDEX FG 4  
细缝填缝剂

## 系统6: 地暖粘结系统 System No.6: Floor Heating System Tile Installation



1 基层	参见“基面处理”	5 反射层	真空镀铝聚酯薄膜
2 找平层	ARDEX A 35 ARDEX E 30 ARDEX B 55	6 填充层	C 15细石混凝土 ARDEX A 35
3 防水层	ARDEX WPM 006	7 粘结层	ARDEX X 28 ARDEX S 16
4 保温层	XPS保温板	8 填缝层	ARDEX FG 3+E 50/E30 ARDEX FG 4+E 50/E30

### ② 找平层



ARDEX A 35  
快凝早强水泥



ARDEX B 55  
找平砂浆



ARDEX E 30  
砂浆增强剂

### ③ 防水层



ARDEX WPM 006  
防水涂料

### ⑥ 填充层



ARDEX A 35  
快凝早强水泥

### ⑦ 粘结层



ARDEX X 28  
超级快凝型瓷砖胶剂



ARDEX S 16  
超级快干型瓷砖胶剂

### ⑧ 填缝层



+



ARDEX FG 3 + E 50  
宽缝填缝剂+填缝添加剂

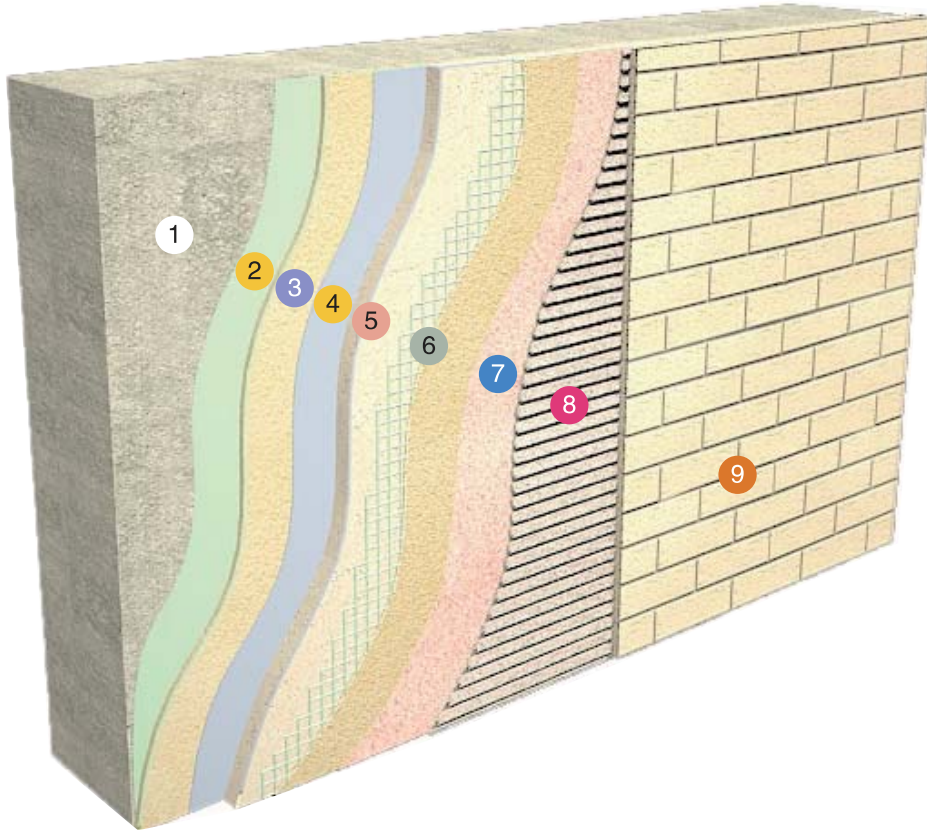


+



ARDEX FG 4 + E 50  
细缝填缝剂+填缝添加剂

## 系统7：外保温粘结系统 System No.7: EIFS Installation



1 基层	参见“基面处理”	5 保温层	无机保温砂浆或有机EPS保温板
2 界面层	参见“基面处理”	6 抹面层	抹面胶浆+钢丝网/网格布
3 找平层	ARDEX B 55 ARDEX E 30	7 抗渗层	ARDEX X 22+WPM 006乳液 ARDEX X 24+WPM 006乳液
4 界面层	无机保温层使用ARDEX P 20 有机保温层使用ARDEX胶粘剂	8 粘结层	ARDEX X 28 ARDEX X 24+E 30
		9 填缝层	ARDEX FG 3+E 50/E30 ARDEX FG 4+E 50/E30

### ② 界面层



ARDEX P 20  
粉末型界面剂 (干粉)



ARDEX P 60  
多用途界面剂 (液体)



ARDEX P 82  
环氧型界面剂

### ③ 找平层



ARDEX B 55  
找平砂浆



ARDEX E 30  
砂浆增强剂

### ⑦ 抗渗层



+



ARDEX X 22+WPM 006  
优质型瓷砖胶粘剂+防水乳液



+



ARDEX X 24+WPM 006  
专业型瓷砖胶粘剂+防水乳液

### ⑧ 粘结层



ARDEX X 28  
超级快凝型瓷砖胶粘剂



+



ARDEX X 24 + E 30  
专业型瓷砖胶粘剂+砂浆增强剂

### ⑨ 填缝层



+



ARDEX FG 3 + E 50  
宽缝填缝剂 + 填缝添加剂



+



ARDEX FG 4 + E 50  
细缝填缝剂 + 填缝添加剂



## 系统8：卫生间粘结系统 System No.8: Bathroom Tile Installation



1 基层	参见“基面处理”	4 防水层	ARDEX WP TAPE+WPM 006
2 界面层	参见“基面处理”	5 粘结层	ARDEX X 24 ARDEX X 26 ARDEX X 28 ARDEX S 16
3 找平层	ARDEX B 55 ARDEX E 30	6 填缝层	ARDEX FG 3 ARDEX FG 4 ARDEX EG 2

### ② 界面层



ARDEX P 20  
粉末型界面剂（干粉）



ARDEX P 60  
多用途界面剂（液体）



ARDEX P 82  
环氧型界面剂

### ③ 找平层



ARDEX B 55  
找平砂浆



ARDEX E 30  
砂浆增强剂

### ④ 防水层



ARDEX WP TAPE+WPM 006  
防水专用胶带+防水涂料

### ⑤ 粘结层



ARDEX X 24  
专业型瓷砖胶粘剂



ARDEX X 26  
强力型瓷砖胶粘剂



ARDEX X 28  
超级快凝型瓷砖胶粘剂



ARDEX S 16  
超级快干型瓷砖胶粘剂

### ⑥ 填缝层



ARDEX FG 3  
宽缝填缝剂



ARDEX FG 4  
细缝填缝剂



ARDEX EG 2  
环氧填缝剂

## 系统9：泳池粘结系统

### System No. 9: Swimming Pool Tile Installation



1 基层	参见“基面处理”	4 防水层	ARDEX WP TAPE+WPM 006
2 界面层	参见“基面处理”	5 粘结层	ARDEX X 24+E 30 ARDEX X 26
3 找平层	ARDEX B 55 ARDEX E 30	6 填缝层	ARDEX FG 3+E 50/E30 ARDEX FG 4+E 50/E30 ARDEX EG 2

#### ② 界面层



ARDEX P 20  
粉末型界面剂（干粉）



ARDEX P 60  
多用途界面剂（液体）



ARDEX P 82  
环氧型界面剂

#### ③ 找平层



ARDEX B 55  
找平砂浆



ARDEX E 30  
砂浆增强剂

#### ④ 防水层



+



ARDEX WP TAPE+WPM 006  
防水专用胶带+防水涂料

#### ⑤ 粘结层



+



ARDEX X 24+E 30  
专业型瓷砖胶剂+砂浆增强剂



ARDEX X 26  
强力型瓷砖胶剂

#### ⑥ 填缝层



+



ARDEX FG 3 + E 50  
宽缝填缝剂+填缝添加剂



+



ARDEX FG 4 + E 50  
细缝填缝剂+填缝添加剂



ARDEX EG 2  
环氧填缝剂



## ARDEX X 22 优质型瓷砖胶粘剂 Superior Tile Adhesive



### 产品说明:

ARDEX X 22 由特种水泥、精选级配骨料，高分子聚合物及特殊添加剂组成。可用于室内外粘贴吸水率大于5%的普通陶瓷墙砖，尤其适合粘贴重质量的文化石。

### 产品优点:

- (1) 防止瓷砖脱落: 粘结强度是普通水泥砂浆的2倍以上, 避免了瓷砖的脱落;
- (2) 防止文化石滑移: 避免了在墙体上粘贴质量高的文化石时发生滑移;
- (3) 防止自收缩脱落: 低收缩性避免了自身收缩应力而导致瓷砖脱落。



(2) 文化石粘贴



(3) 普通的瓷砖胶自身收缩, 开裂

### 应用范围:

适用于室内外所有吸水率大于5%的瓷砖粘贴, 特别适合粘贴质量重的文化石。

### 包装及储存期:

25kg, 12个月

### Description:

ARDEX X 22 is a cement-based tile adhesive for fixing wall tiles with water absorption over 5%, and is suitable for interior and exterior use, ideal for heavy feature stones.

### Advantage:

- (1) Prevents Debonding: Double bonding Strength of cement and sand mortars;
- (2) Easy Application : Can apply heavy stones such as "Culture Stone" with little to no sagging;
- (3) Minimizes Shrinkage: thus greatly reduces the chance of failures and falling tiles.

### Application Range:

Suitable for tiles with water adsorption >5%, internal and external area. Designed for decorative culture stone.

### Packaging & Shelf-life:

25kg, 12 months.



## ARDEX X 24 专业型瓷砖胶粘剂 Professional Tile Adhesive



### 产品说明:

ARDEX X 24 由特种水泥、精选级配骨料，高分子聚合物及特殊添加剂组成。优异的粘结强度和抗滑移能力特别适用粘贴吸水率大于0.3%的玻化砖。

### 产品优点:

- (1) 防止玻化砖脱落: 由于添加了聚合物, 提高了粘结强度, 避免了粘贴吸水率低的玻化砖而脱落;
- (2) 防止泳池瓷砖脱落: 可长期泡水, 避免了泡水后粘结强度降低从而导致瓷砖脱落;
- (3) 防止自收缩脱落: 柔性好, 自身收缩率低, 避免了自身收缩应力而导致玻化砖脱落。



(1) 玻化砖粘贴



(3) 普通的瓷砖胶粘结力差, 无法粘结吸水率低的玻化砖

### 应用范围:

适用于室内外的瓷砖粘贴, 特别适合粘贴吸水率低的玻化砖。

### 包装及储存期:

25kg, 12个月

### Description:

ARDEX X 24 is a cement based, floor and wall tile adhesive, consisted by special cement, selective filler, superpolymer and special additives, particularly suitable for ceramic tiles with water absorption > 0.3 .

### Advantage:

- (1) Prevent Debonding : Designed for porcelain and fully vitrified tiles;
- (2) Wet Areas: Ideal for swimming pool application without a loss of adhesive strength;
- (3) Minimizes Shrinkage: thus greatly reduces the chance of failures and falling tiles.

### Application Range:

Suitable for internal and external area. Designed for porcelain and fully vitrified tiles.

### Packaging & Shelf-life:

25kg, 12 months.



## ARDEX X 26 强力型瓷砖胶粘剂 High Performance Tile Adhesive



### 产品说明:

ARDEX X 26 由特种水泥、精选级配骨料，高分子聚合物及特殊添加剂组成。优异的柔韧性和抗滑移能力尤其适合重型瓷砖和天然石材（非湿汽敏感型）的粘结。

### 产品优点:

- (1) 防止天然石材脱落：由于添加了大量的聚合物，提高了粘结强度，避免了粘贴质量重的天然石材而脱落；
- (2) 方便粘贴重质砖：在墙面粘贴大型或重质、吸水率极低的砖石时，无需支撑。



(1) 基层刮胶，石材背面刮胶

(2) 粘贴天然石材

### 应用范围:

适用于室内外瓷砖粘贴，特别适合粘贴非湿气敏感的天然石材。

### 包装及储存期:

25kg, 12个月

### Description:

ARDEX X 26 is consisted by special cement, selective aggregate, superpolymer and special additives. Excellent flexibility and slip resistance, particularly suitable for fixing heavy tiles and natural stone (not moisture sensitive).

### Advantage:

- (1) Prevents Debonding: Designed for large format tile – 1 m x 1m;
- (2) Easy application : Ideal for fixing heavy weight and low water absorbent tiles on the wall.

### Application Range:

Suitable for internal and external area. Designed for large heavy format tile.

### Packaging & Shelf-life:

25kg, 12 months.



## ARDEX X 28 超级快凝型瓷砖胶粘剂 Super Rapid Hardening and Fast-setting Tile Adhesive

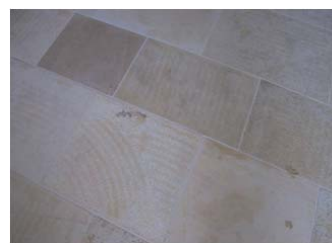


### 产品说明:

ARDEX X 28 由特种水泥、精选级配骨料，高分子聚合物及特殊添加剂组成。快凝，早强及柔性的特性使得ARDEX X 28 特别适合粘贴天然石材，避免天然石材泛碱，变色。

### 产品优点:

- (1) 防止石材透底：2小时后就固化了，避免了瓷砖胶渗入石材，从而避免浅色石材发生透底现象；
- (2) 粘结效果更安全：短时间内的强粘结强度，避免因饰面砖变形而导致空鼓剥落，以及适用于冬季昼夜温差变化大的粘贴环境；
- (3) 更高的变形能力：可在基层或饰面砖变形较大的情况下保持极佳的粘结力，避免饰面砖的空鼓。



(1) 石材透底

### 应用范围:

适用于室内外的瓷砖粘贴，粘贴非湿气敏感的天然石材，以及低温条件下的砖石粘贴施工。

### 包装及储存期:

15kg, 6个月

### Description:

ARDEX X 28 is a cement based, floor and wall tile adhesive consisted by special cement, selective filler, superpolymer and special additives. Specifically to enhanced properties of adhesion and flexibility. Ideal for fixing most non-moisture sensitive natural stone floor and wall tile.

### Advantage:

- (1) Minimizes the discoloration of natural stone: hardening in 2 hours avoid the tile adhesive penetrating into natural stone;
- (2) High performance: Rapid hardening with high early bonding strength reducing voids causing deformation of tiles this enabling tiling during a day with great temperature differences;
- (3) Flexibility: Maintains a high tensile strength when substrates or tile deform.

### Application Range:

Suitable for internal and external area. Designed for non-moisture sensitive natural stone tiles and Fast Track renovation concept.

### Packaging & Shelf-life:

15kg, 6 months.



## ARDEX X 77 纤维增强型瓷砖胶粘剂 Microtec Flexible Adhesive



### 产品说明:

ARDEX X 77 是一高性能纤维增强型墙地面瓷砖胶粘剂, 采用了ARDEX独特的“超微科技”技术, 具有超强的粘结性能。通过融合了超微纤维、胶凝体系以及特殊的可再分散乳胶粉, 形成了一种极其独特稳固的薄贴系统, 显著增强瓷砖粘结剂内聚力, 即使与不易粘结的瓷砖之间都具备超强粘接力。

### 产品优点:

- (1) 防止脱落: 由于添加了大量的聚合物, 提高了粘结强度, 避免了粘贴质量重的各类砖石而脱落;
- (2) 防止滑落: 避免了在墙体上粘贴质量高的瓷砖或石材时发生滑落, 粘贴过程中无需使用支撑;
- (3) 超长的开放时间: 更适合室内/外高温粘贴砖石;
- (4) 极佳的变形能力: 可在基层或饰面砖变形较大的情况下保持极佳的粘结力, 避免饰面砖的剥落。

### 应用范围:

适用于室内外的瓷砖粘贴, 几乎适合在所有的坚实基层上粘贴所有的饰面砖石。

### 包装及储存期:

25kg, 12个月

### Description:

ARDEX X 77 is a high performance, fibre reinforced, polymer modified wall and floor tile adhesive, which has been specially formulated with Microtec Technology to give exceptional properties of adhesion. The mix of micro fibers, binder system and special dispersion powders provides a unique stabilising thinnest system. With this new technology the inner strength of the CTA will be enhanced and the adhesion properties with critical tiles will be assured.

### Advantage:

- (1) Premium Performance : Ideal for ALL tile types including porcelain, fully vitrified, mosaics and terrazzo;
- (2) No Slip : Tiling Large heavy tiles & stone without support;
- (3) Incredible Open Time : Even on the toughest job sites;
- (4) Excellent Flexibility and Adhesion: Adheres strongly to most construction materials including dry wall system Gypsum, plaster board, and heated sub-floors.

### Application Range:

Suitable for most tiles, to all of the firm substrates, internal and external areas.

### Packaging & Shelf-life:

25kg, 12 months.



## ARDEX S 16 超级快干型瓷砖胶粘剂 Super Rapid Drying Tile Adhesive



### 产品说明:

ARDEX S 16 由特种水泥、高品质合成树脂与骨料所组成的米白色粉剂, 和水混合后成为约有30分钟工作时间无结块易施工的砂浆。使用ARDEX S 16 粘贴瓷砖和马赛克在常温下2小时后即可填缝作业和上人。

### 产品优点:

- (1) 粘结效果更安全: 短时间内的粘结强度, 避免因饰面砖变形而导致空鼓剥落, 以及适用于冬季昼夜温差变化大的粘贴环境;
- (2) 更高的变形能力: 可在基层或饰面砖变形较大的情况下保持极佳的粘结力, 避免饰面砖的空鼓;
- (3) 避免石材返碱和变色: 快干, 固化后碱含量接近中性, 粘贴吸水率高的天然石材不返碱, 不变色, 不透底。



(3) 石材泛碱, 石材变色

### 应用范围:

特别适合粘贴湿气敏感的天然石材, 以及低温条件下的砖石粘贴施工。

### 包装及储存期:

25kg, 6个月

### Description:

ARDEX S 16 is an off-white powder based on special cements, high quality synthetic resins and fillers which is mixed with water to produce a slump free, easily applied mortar with a working time of approximately 30 minutes. Tiles and mosaics fixed with ARDEX S 16 can be grouted and subjected to light loads only 2 hours after fixing at normal temperature.

### Advantage:

- (1) High performance: Rapid hardening with high early bonding strength reducing voids causing deformation of tiles this enabling tiling during a day with great temperature differences; (winter season)
- (2) Flexibility: Maintains a high tensile strength when substrates or tile deform;
- (3) Slip resistance: Tiling heavy tiles & stone without support;
- (4) Minimizes efflorescence and discoloration: rapid dry and close to neutral pH after curing.

### Application Range:

Designed for moisture sensitive natural stone tiles and Fast Track renovation concept.

### Packaging & Shelf-life:

25kg, 6 months.



## ARDEX FG 3 宽缝填缝剂 Wide Joint Grout

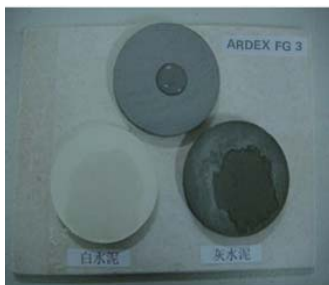


### 产品说明:

ARDEX FG 3 适用于宽度为4至12mm的墙面及地面的填缝。与水搅拌后, ARDEX FG 3 可以形成膏体状砂浆, 具有优异的填缝性能, 可一次性完成较深填缝施工。干硬后具有耐候性和耐水性。

### 产品优点:

- (1) 防止饰面砖表面泛碱: 因憎水性极好, 从而吸水量极低, 避免了因水分渗入砂浆找平层而泛碱;
- (2) 抗开裂: 因为收缩小, 填缝剂不易开裂;
- (3) 抗色变: 无机颜料的耐候性极好, 不会因阳光曝晒, 雨水的侵蚀而变色。



(1) FG 3/白水泥/灰水泥, 吸水率对比

### 应用范围:

适用于室内外瓷砖的填缝, 缝宽在4~12mm。  
可适用于室内外干燥、潮湿或非侵蚀水的泳池环境。

### 包装及储存期:

25kg, 12个月

### Description:

ARDEX FG 3 is suitable for grouting wall or floor tile joints from 4-12mm wide. The ARDEX FG 3 powder, when mixed with water, produces a soft, creamy, easily worked mortar with good filling properties, enabling deep joints to be filled in one operation. The hardened grout is weather resistant, unaffected by water.

### Advantage:

- (1) Minimizes efflorescence: Excellent water repellency helps prevent efflorescence caused by water penetration from substrates and the environment;
- (2) Reduced cracking: Due to low shrinkage to the select aggregates and binders;
- (3) Color Stable: weather resistant formulation.

### Application Range:

Suitable for tiles with joints 4~12mm, wall and floor, internal and external.

Suitable for internal and external use in dry or wet conditions, including swimming pools.

### Packaging & Shelf-life:

25kg, 12 months.



## ARDEX FG 4 细缝填缝剂 Fine Joint Grout



### 产品说明:

ARDEX FG 4 适用于宽度为1至6mm的墙面及地面的填缝。与水搅拌后, ARDEX FG 4可以形成膏体状砂浆, 具有优异的填缝性能, 可一次性完成较深填缝施工。干硬后的填缝剂具有耐候性和耐水性, 具有纹理表面并且抗渗水。

### 产品优点:

- (1) 抗开裂: 因为柔性好, 收缩小, 填缝剂不易开裂, 避免了因水分渗入砂浆找平层而泛碱;
- (2) 填充细缝: 极细的骨料可以填充极小的缝;
- (3) 抗色变: 无机颜料的耐候性极好, 不会因阳光曝晒, 雨水的侵蚀而变色。

### 应用范围:

适用于室内瓷砖的填缝, 缝宽在1~6mm。  
室内外干燥、潮湿或非侵蚀水的泳池环境。

### 包装及储存期:

25kg, 12个月

### Description:

ARDEX FG 4 is suitable for grouting wall or floor tile joints from 1mm to 6mm wide. The ARDEX FG 4 powder, when mixed with water, produces a soft, creamy, easily worked mortar with good filling properties, enabling deep joints to be filled in one operation. The hardened grout is weather resistant, unaffected by water. The surface of the hardened grout has a textured finish and is not impervious.

### Advantage:

- (1) Minimize cracking and efflorescence: Avoid shrinkage crack which prevent water penetration to screed/render layer;
- (2) Designed for small joints;
- (3) Color Stable: weather resistant formulation.

### Application Range:

Suitable for tiles with joints 1~6mm, Wall and Floor, internal and external.

Suitable for internal and external use in dry or wet conditions, including swimming pools with non-aggressive water conditions.

### Packaging & Shelf-life:

25kg, 12 months.



## ARDEX EG 2 环氧填缝剂 Epoxy Grout

### 产品说明:

ARDEX EG 2 环氧填缝剂结合了传统环氧填缝剂的技术性能以及水泥基填缝剂的施工便利, 并且施工时无需特殊工具。

### 产品优点:

- (1) 抗霉变: 耐化学腐蚀, 致密材料, 霉菌无法附着;
- (2) 极易清洁: 避免了各种茶, 酱油, 油等的沾污, 清洁变得极方便;
- (3) 不泛碱;
- (4) 防止填缝剂脱落: 因为耐磨性极好, 用于人流量大, 负载高的公共区域填缝剂不脱落。



(1) 填缝霉变



(2) 永不沾污, 易清洁

### 应用范围:

适用于室内泳池, 厨卫间, 人流量大, 负载高的公共区域, 缝宽在1~12mm。

### 包装及储存期:

5kg/套, 24个月。

### Description:

ARDEX EG 2 Epoxy Grout combines the technical performance properties of an epoxy based grout with the ease of application associated with cement based grouts without requiring any special tools.

### Advantage:

- (1) Antimicrobial Protection: resists unsightly mold and bacteria from growing;
- (2) Easy to clean : Resistant to tea, soy sauce, oil, and most other household items which helps maintain cleanability;
- (3) Non-efflorescing;
- (4) Strong : With excellent abrasion resistance, extremely suitable for heavy public area such as underground stations.

### Application Range:

Suitable for tiles with joints 1~12mm, particularly suitable for internal and external areas like indoor pool, kitchen and bathroom or public areas with heavy loads and traffic flow.

### Packaging & Shelf-life:

5kg/set, 24 months.



## ARDEX EG 3 超强环氧填缝剂 Superior Epoxy Grout

### 产品说明:

ARDEX EG 3 超强环氧填缝剂是一种特殊配方的无溶剂型环氧填缝剂, 具有卓越的耐污和耐化学腐蚀性能, 并具备优异的施工性能。

### 产品优点:

- (1) 抗霉变: 耐化学腐蚀, 致密材料, 霉菌无法附着;
- (2) 极易清洁: 避免了各种茶, 酱油, 油等的沾污, 清洁变得极方便;
- (3) 用于1~3mm缝宽
- (4) 无溶剂环保配方、低VOC、不含APEO

### 应用范围:

ARDEX EG 3 可在室内及室外; 墙面和地面使用; 由于其耐污和耐化学性能, 非常适合对于卫生、清洁度有高标准要求的住宅、商业及常规工业区域。

ARDEX EG 3 适用于陶瓷砖、大理石、花岗石及马赛克等各种砖类和石材。

特别适用于高档马赛克拼花的填缝。

### 包装及储存期:

ARDEX EG 3 为2.2kg 桶装 A、B、C 三组份, 封装在专用搅拌桶内。

在未开封原装桶内, 可保存至少24个月。

### Description:

ARDEX EG 3 Superior Epoxy Grout is a special designed solvent free epoxy grout with excellent stain and chemical resistance along with good workability.

### Advantage:

- (1) Chemical resistance: Excellent resistance to acids, alkali, and many other chemicals. Contains antimicrobial protection;
- (2) Stain Resistant: Virtually eliminates common household stains and dirt pick up;
- (3) For joint widths 1-3mm;
- (4) Solvent free, low VOC, APEO free.

### Application Range:

ARDEX EG 3 can be used for both internal and external area; wall and floor; specially suitable for residential, commercial and normal industrial areas where high standards of hygiene and cleanliness are required.

ARDEX EG 3 can be used for grouting different tiles, marble and glass mosaics with the joint of 1-3mm.

It's designed for grouting of artistic mosaic.

### Packaging & Shelf-life:

A 2.2kg unit of ARDEX EG 3 contains Parts A, B and C conveniently packaged in a mixing bucket.

ARDEX EG 3 has a storage life of not less than 24 months in the original unopened container.



## ARDEX E 30 全能砂浆增强剂 Multifunctional Mortar Additive

### 产品说明:

ARDEX E 30全能砂浆增强剂是一种通用水泥砂浆增强剂，与现场搅拌砂浆混合后可提高其抗压强度、弯折强度和粘结强度，与瓷砖胶搅拌后可提高瓷砖胶的强度，以及提升瓷砖胶和填缝剂的多项特殊性能（如耐高低温变化性能、耐震动、耐磨性能等）。

### 产品优点:

- (1) 预防找平层空鼓：避免砂浆找平层与基层因粘结力差而引起空鼓；
- (2) 预防砂浆开裂：干法砌砖、抹灰，不用泼水浸砖，湿墙，并且增加砂浆的柔韧性，避免开裂；
- (3) 满足高设计需求：大幅提升砂浆各项物理指标，如抗折、抗压等。



(2) 粘接力强，堆头不掉浆，干法砌砖

### 应用范围:

适合于建筑室内/室外的墙面/地面现场搅拌的砌筑砂浆和找平砂浆的改性。

### 包装及储存期:

20L, 12个月。

### Description:

ARDEX E 30 is a multifunctional mortar additive designed to improve compressive strength, flexural strength, bonding strength of the normal onsite mortar and tile adhesive, ensure the performance of tile grout in some critical areas.

### Advantage:

- (1) Reduces voids in the leveling layer: insufficient bonding strength occurs when renders/screeds have voids. ARDEX E 30 helps prevent this;
- (2) Minimizes cracks: by decreasing the shrinkage and increasing the flexibility of the mortar, no need to wet substrate;
- (3) Meets very demanding requirements: Can be used with a variety of different materials to help you overcome difficulties.

### Application Range:

Suitable for leveling renders or screeds in interior and exterior areas.

### Packaging & Shelf-life:

20L, 12 months.



## ARDEX E 50 填缝添加剂 Grout Additive

### 产品说明:

ARDEX E 50 填缝添加剂是采用特种配方用于填缝剂的水性聚合物乳液增强剂。与ARDEX水泥基填缝剂混合后，可以提高粘结性能和柔性并减少开裂，增加抗磨性避免起粉。ARDEX E 50 还可提高耐污性能，增加色彩鲜艳度。

### 产品优点:

- (1) 浸水安全：使得填缝剂可以用在长期浸水部位；
- (2) 形变安全：使得填缝剂可以用于变形较大的如外保温、地暖等系统；
- (3) 粘结安全：提高填缝剂对水汽及微生物的抗侵蚀能力，防霉防玷污能力更佳。



(1) 泳池



(2) 地暖上，瓷砖拱起，变形

### 应用范围:

与ARDEX填缝剂配套使用，适用于长期浸水区域和在高变形的基层上填缝。

ARDEX E 50 采用易于清洁的配方，可用于室内、室外、商业建筑和住宅的地面与墙面。

### 包装及储存期:

20kg, 12个月

### Description:

ARDEX E 50 is a specially formulated, water-based, synthetic polymer grout additive. When mixed with ARDEX cement-based grouts, ARDEX E 50 improves adhesion, flexibility to reduce cracking and abrasion strength to avoid powdery grout. It can also be used to assist with reducing staining and for enhancing grout color. ARDEX E 50 has been developed in an easy to clean formula; it can be used for internal or external, commercial and residential applications on both the floor and wall.

### Advantage:

- (1) Underwater: suitable for permanent immersion areas;
- (2) Imparts flexibility: ideal for ETICS and floor heating system;
- (3) Satisfy high standard of hygiene: combats mould growth, has longer lasting new look.

### Application Range:

High performance to use with ARDEX cement based grout.

### Packaging & Shelf-life:

20kg, 12 months.





## ARDEX WPM 006(I)(II)(III) 超弹、高柔、柔性防水涂料 Waterproofing Membrane Type (I)(II)(III)

### 产品特性:

- (1) 乳液固含量高: 更高的聚合物乳液固含量及乳灰比, 从而有更好的断裂延伸率;
- (2) 背水面防水: II和III型可用在背水面防水;
- (3) 透气性好: 可在潮湿的基层上施工, 适合在雨季施工, 省工省时。



(1) 乳液固含量高, 柔性好, 拉伸强度高

### 产品优点:

- (1) 预防开裂: 可适应基层变形及细小裂缝;
- (2) 维修方便: 可在背水面防水, 一旦发生渗水, 可在背水面维修, 施工方便;
- (3) 无毒环保: 对人体无伤害。

### 应用范围:

适合于建筑物的室内外墙体、地面、游泳池、卫浴厨等区域的防水。

### 包装及储存期:

- I型 (20L液体+25kg粉剂)
- II型 (20L液体+40kg粉剂)
- III型 (9kg液体+25kg粉剂), 12个月。

### Feature:

- (1) Excellent elongation: ARDEX WPM 006 is a polymer modified, high solids waterproofing membrane with excellent elongation at break;
- (2) Resistance to negative hydrostatic pressure: ARDEX WPM 006 Type II & III fulfill the requirements of negative hydrostatic pressure;
- (3) Vapor permeable allowing the application on various moist substrates. Saves labor and time for use during the raining season.

### Advantage:

- (1) Isolates Small cracks: Excellent elongation can compensate for some slight movements in the substrate;
- (2) Convenient: ARDEX WPM 006 resists negative pressure;
- (3) Ecological formula: no harm to human body.

### Application Range:

Suitable for wall and floor, interior and exterior areas, also wet areas such as pool, bathroom and kitchen.

### Packaging & Shelf-life:

- Type I (20L liquid+25kg powder)
- Type II (20L liquid+40kg powder)
- Type III (9kg liquid+25kg powder), 12 months.



## ARDEX WPS 18 高强型柔性防水浆料 High Strength Flexible Waterproofing Slurry

### 产品说明:

ARDEX WPS 18 是一种高抗压, 聚合物改性水泥基柔性防水涂层。可用于混凝土、水泥砂浆等绝大多数基层上, 与后续贴砖等施工有良好的粘结性能。适应有轻微变形和裂纹的表面, 防水透汽, 整体涂覆式防水抗渗漏。抗沉淀, 易涂刷。特别适用于刚性墙地面的大面积防水涂刷。

### 产品优点:

- (1) 柔性配方, 乳液固含量高, 可覆盖细微裂纹;
- (2) 抗渗性高, 耐久性好;
- (3) 粘结强度高, 不空鼓, 不起皮, 不起粉;
- (4) 自身拉伸强度高, 可在防水层上粘贴重砖和石材;
- (5) 绿色环保, 无毒无害。

### 应用范围:

室内及室外、一般住宅和商业空间、墙面及地面。适用于阳台、卫浴间、厨房以及茶水间等有覆盖物保护的防水区域。

### 包装及储存期:

桶装18kg: 乳液4.2 kg, 粉剂13.8kg。  
大包装32.5kg: 乳液7.5kg, 粉剂25kg。  
未开封干燥阴凉处(23℃及50%相对湿度)情况下, 可保存12个月。

### Description:

ARDEX WPS 18 is a high strength polymer modified cement based flexible waterproofing slurry. It can be used on most substrate such as concrete and cement screed, and has excellent bonding strength. Suitable for surfaces with slight deformation and cracks, it is waterproof and permeable, anti-precipitation and easy to apply. This product is especially suitable for large area waterproofing coating of rigid walls and floors.

### Advantage:

- (1) Flexible, high solid, can cover crazing.
- (2) Good water resistance and durability.
- (3) High Bonding strength, no debonding, peeling or falling off.
- (4) High tensile strength, can install heavy brick and stones on waterproofing layer.
- (5) Environmentally friendly, non-toxic and hazard free.

### Application Range:

Internal & external; Residential & Commercial; Walls, floors. Suitable for waterproofing areas with covers such as balcony, bathroom, kitchen, pantry, etc.

### Packaging & Shelf-life:

18kg/set: Liquid 4.2 kg, powder 13.8kg;  
32.5kg/set: Liquid 7.5kg, powder 25kg;  
12 months when stored in the original unopened packaging, in a dry place at 23℃ and 50% relative humidity.



## ARDEX WPM 256 水性环氧树脂增强剂&界面剂 Water Based Epoxy Bonding Bridge

### 产品说明:

ARDEX WPM 256为透明、双组份水性环氧聚酰胺产品。主要作为新、旧水泥基材料粘结界面剂使用，亦可作为多种材料表层封闭使用及不同材质间的界面处理剂，当与水泥基材料混合后可大幅增强粘结性及抗压强度。不燃、无臭。

### 产品优点:

- (1) 可用于混凝土建筑物的修补工作;
- (2) 可适用于潮湿基面;
- (3) 与水泥砂浆混合使用，与多种基面具有超强粘结能力，或对光滑基层的拉毛。

### 应用范围:

作混凝土养护用途时，具有保水作用，有助于混凝土养护，同时封闭表层。与水泥砂浆混合后作为结构性修补砂浆甚至作为防水砂浆或填缝用。与水泥混合后可作为表层装饰。增强新、旧水泥基材料之间的粘结能力。

### 包装及储存期:

10L主剂 +10L固化剂 /组桶装。  
室内干燥处未开封情况下约24个月。

### Description:

ARDEX WPM 256 is a two component water based epoxy polyamide unpigmented wet-on-wet primer new to old concrete bonding bridge and admixture for cement based materials.

### Advantage:

- (1) Used as an epoxy admixture for cementitious products used for concrete repair;
- (2) Can be applied to damp surfaces;
- (3) Has excellent adhesion to most substrates including brick, masonry, concrete block, concrete, compressed fibre board, stone and timber.

### Application Range:

- As a new to old concrete bonding bridge to substantially improve the bonding characteristics.
- As an admixture to cement to produce variable strength repair mortars and waterproofing grouting material.
- As a concrete curing membrane to contain the water and as an aid to the curing of and sealing of concrete.

### Packaging & Shelf-life:

10L(PART A)+10L(PART B)  
Can be stored for approximately 24 months in originally sealed packaging in place free from frost.



## ARDEX WPM 300 水性环氧树脂防水膜 Water Based Epoxy Membrane



### 产品说明:

ARDEX WPM 300为一双剂型水性环氧聚酰胺树脂阻绝涂覆型材料，符合饮用水用料标准 AS4020&BS6920。可用于防止上升潮气以及负水压。

### 产品优点:

- (1) 符合澳大利亚及英国建筑饮用水标准AS4020&BS6920，可直接与饮用水接触;
- (2) 涂布于基面直接附着后，能抵挡250kPa静水压力，约等同于25m深静水压力;
- (3) 与ARDEX WPM 256搭配使用，采湿对湿立即接续施工，更可抵挡400kPa静水压力;
- (4) 涂层表面可覆盖几乎所有装饰用或工业用表面涂料;
- (5) 不燃、无臭、无毒、环保。

### 包装及储存期:

10L主剂+10L液剂/组。  
未开封干燥阴凉处(23℃及50%相对湿度)情况下，保存24个月。

### Description:

ARDEX WPM 300 is a two component water based epoxy polyamide membrane/barrier coating, designed for use in situation of rising damp to resist negative water pressure. Approved for use with potable (drinking) water, independent testing confirms conformity with the requirement of AS4020&BS6920.

### Advantage:

- (1) Conforms to the requirements of : Australian standard 4020-2000 and British Standard 6920 for use in contact with potable water;
- (2) When applied directly to the substrate the cured membrane will withstand 250kPa hydrostatic pressure which is equivalent to a 25 metre head of water;
- (3) When used wet on wet over ARDEX WPM 256 Bonding Bridge the cured membrane will withstand 400kPa pressure which is equivalent to 40 metre head of water;
- (4) Can be over coated using almost any decorative or industrial finishing paint;
- (5) Easy clean-up using water.

### Packaging & Shelf-life:

10L(PART A)+10L(PART B)  
Can be stored for approximately 24 months in originally sealed packaging in place free from frost.



## ARDEX 8+9 快干型超弹防水涂料 Rapid Waterproofing Membrane

### 产品说明:

ARDEX 8+9是双组份,无溶剂型水泥基防水涂料。由丙烯酸液体化合物,波特兰水泥和其他液压水泥基粉剂组成。ARDEX 8+9的施工性能强,使用滚筒或刷子施工即可形成高柔性防水涂层。

### 产品优点:

- (1) 节省时间成本:特别适用于快速施工项目或维修项目,传统的JS防水涂料要3~5天之后才可以粘贴瓷砖;
- (2) 保持良好的防水效果:即使是在细部节点,管根、阴阳角等区域。

### 应用范围:

适用于室内外地面或墙面,可适应后续粘贴各种瓷砖及石材。

### 包装及储存期:

20kg液体+20kg粉剂,12个月。

### Description:

ARDEX 8+9 is a best-in-class, two-component, solvent-free, cement-based membrane. Comprised of an acrylic-based liquid compound and a Portland and other hydraulic cement-based powder, ARDEX 8+9 can be applied easily with a paint roller or a brush to produce a highly flexible, waterproof coating.

### Advantage:

- (1) Working efficiency: ideal for fast track renovation, traditional JS waterproofing coating requires 3~5 days before proceeding tile adhesion;
- (2) Excellent waterproofing: Especially designed for the details work, e.g. jointing, filling mortar, drainage and corner. Perfect for creating a waterproof joint between wall and floor.

### Application Range:

Suitable for internal and external walls, different types tiles and stones.

### Packaging & Shelf-life:

20kg liquid+20kg powder, 12 months.



## ARDEX WP Tape 防水专用胶带

### 产品说明:

ARDEX防水专用胶带是由高强无纺布和特种胶粘剂复合而成,具有断裂延伸率高,粘结力强,耐水,耐候性好等特点,可与防水涂料结合使用,可用于室内外各种高振动,高位移,大变形的区域。

### 产品优点:

- (1) 防止回弹:避免一般的防水增强材料在施工中容易回弹,从而导致局部空鼓及漏水;
- (2) 抵御变形:作为防水增强材料,极大地提升了防水涂料抵御应力变形能力,避免了防水层开裂渗水;
- (3) 省工省时:比传统的无纺布快捷,方便。



(2) 基层涂刷防水涂料后,铺贴防水专用胶带

### 应用范围:

适合于所有防水区域的阴阳角、管道、门窗等基层变形较大部位的防水层增强处理。

### 包装及储存期:

40m, 24个月

### Description:

ARDEX WP Tape is made with high strength non-woven fabric and special adhesive. With high elongation, high bonding strength, water resistance, weather resistance, ARDEX WP Tape is designed to use with ARDEX waterproofing membrane for internal and external area with high vibration or high movement.

### Advantage:

- (1) Highly Effective;
- (2) Stops Leaks in corners doesn't deform or debond thus stopping leaks of waterproof membranes in corners;
- (3) Saving time and work: more efficient than nonwoven cloth.

### Application Range:

Applicable for all corners, pipes, windows and doors, gaps and areas which can easily deform.

### Packaging & Shelf-life:

40m, 24 months.



## ARDEX B 55 聚合物改性墙面找平砂浆 Wall Leveling Compound

### 产品说明:

ARDEX B 55 聚合物改性墙面找平砂浆由无机胶凝材料、精选填料与柔韧性强化高分子聚合物及特殊添加剂组成，设计用于墙体表面粉光平整材料。

### 产品优点:

- (1) 预防找平层空鼓：保水性佳，为水化反应提供充足水份，避免空鼓；
- (2) 预防开裂：避免现场调配砂浆因自身收缩大而引起开裂；
- (3) 省工：预混干砂浆，只需加水搅拌，使用便捷，施工和易性佳。



(1) 保水性佳



(2) 现场搅拌砂浆收缩率大，容易开裂

### 应用范围:

适合于建筑室内/室外的墙面。

### 包装及储存期:

25kg, 12个月

### Description:

ARDEX B 55 Wall Leveling Compound is a specially formulated pre-blended cement/sand render, requiring only the addition of water to produce a slump free mortar.

### Advantage:

- (1) Reduces voids in the bonding layer: Prevents water loss of the cement during hydration in the render;
- (2) Reduced Shrinkage: Decreased shrinkage and cracking especially compared with traditional "on-site" mixtures;
- (3) Labor saving: premixed, ready to use, just add water.

### Application Range:

Suitable for internal and external walls.

### Packaging & Shelf-life:

25kg, 12 months.



## ARDEX A 35 快干早强水泥 Rapid Hardening & Drying Cement



### 产品说明:

ARDEX A 35 与0-8mm粒径粗沙混合再加水拌合后，可作为各种水泥砂浆层使用。其成份中含特殊合成树脂使其易于操作，镟整后约三个小时即可开放步行。

### 产品优点:

- (1) 大幅度省时：大幅度缩短了养护时间，一天后即可进行后续施工；
- (2) 杜绝了饰面层泛碱：避免了普通砂浆找平层因碱性高而导致饰面层泛碱；
- (3) 不开裂：避免了砂浆层会因自身收缩而开裂。



(1) 快干，3小时后可行人



(2) 碱含量极低，几乎为中性

### 应用范围:

适合建筑室内地面的找平，尤其适合地面的翻新找平。室内使用，和不可用于长期浸水处。

### 包装及储存期:

25kg, 6个月。

### Description:

Manufacture of cement screeds with the special cement ARDEX A 35, which has been improved with synthetic resin and is mixed with sand of grain size 0-8 mm and water to give an earth-moist to soft-moldable screed mortar.

### Advantage:

- (1) Time saving: Regardless of thickness it can receive floor coverings including ceramic tiles after 24 hrs. Can be pumped;
- (2) Minimizes Efflorescence: ARDEX A 35 is low alkali and is much less prone to cause efflorescence compared with traditional cement;
- (3) Non-cracking: doesn't crack from shrinkage.

### Application Range:

Suitable for internal floor leveling, especially for renovation projects where time is of the essence. ARDEX A 35 cannot be used outdoors or in permanently wet areas.

### PACKAGING & SHELF-LIFE:

25kg, 6 months.



## ARDEX A 45 快速修补砂浆 Rapid Hardening & Drying Internal Repair Mortar



### 产品说明:

ARDEX A 45 是一种用于室内修补的早凝快干、抗垂流的特种功能性砂浆。该产品干固很快并能提供您所期望的砂浆强度和硬度。在20℃环境下，工作时间约15分钟，1.5小时即可硬化上人行走，接续进行其它施工。

### 产品优点:

- (1) 大幅度省时: 极大缩短了养护时间, 1.5小时后即可进行后续施工, 尤其满足了对基层含水率敏感的饰面材料的施工要求;
- (2) 杜绝了饰面层泛碱: 避免了普通砂浆找平层因碱性高而导致饰面层泛碱;
- (3) 不开裂: 避免了砂浆层因自身收缩而开裂。



(1) 水管区域的砂浆修补

### 应用范围:

适合建筑室内地面, 墙体, 砂浆或混凝土的修补。

### 包装及储存期:

25kg, 6个月。

### Description:

ARDEX A 45 is a rapid setting and drying, slump-free mortar for internal repairs. The mortar dries and hardens rapidly to give a repair of exceptional strength and hardness. The mixed mortar sets after approximately 15 minutes and can be trafficked after 1½ Hours at 20°C.

### Advantage:

- (1) Time saving: Regardless of thickness it can receive floor coverings including ceramic tiles after 1.5 hours;
- (2) Minimizes Efflorescence: ARDEX A 45 is low alkali and is much less prone to cause efflorescences compared with traditional cement;
- (3) Non-cracking: doesn't crack from shrinkage.

### Application Range:

Suitable for internal floor leveling, especially for renovation projects where time is of the essence.

### PACKAGING & SHELF-LIFE:

25kg, 6 months.



## ARDEX A 50 全能型快速修补砂浆 External Rapid Hardening Repair Mortar

### 产品说明:

ARDEX A 50 是一种用于室内外修补的早凝、抗垂流的特种功能性砂浆。该产品能在较短时间内提供您所期望的砂浆强度和硬度。混合后的砂浆约有60分钟的工作时间, 在23℃情况下约3小时后可以上人行走。

### 产品优点:

- (1) 快凝 —— 约3-4小时后即可进行后续贴砖等操作;
- (2) 施工便捷不受厚度影响;
- (3) 设计用于砖墙及混凝土基面上孔洞和裂缝的修补;
- (4) 可用于找坡;
- (5) 可作为临时耐磨表层。

### 应用范围:

ARDEX A 50 适用于整平和修补楼梯踏步、普通砂浆基面、混凝土地面等; 填补墙面、天花板等的孔洞; 修复门窗框架的四周基面; 填补管道周围孔隙; 可镟整坡道, 从1.5mm可镟整到正常厚度; 可制作墙地面转角处的圆弧踢脚线、树脂地面施工前的基面修补。

如果需要将A 50 作为永久耐磨表面, 则需要适合的铺贴材料或涂层覆盖。

### 包装及储存期:

25kg, 未开封储存于室内阴干处约6个月。

### Description:

ARDEX A 50 is a rapid hardening, slump-free mortar for internal and external repairs. The mortar hardens rapidly to give a repair of exceptional strength and hardness. The mixed mortar sets after approximately 60 minutes and can be trafficked after approx. 3 hours at 23°C.

### Advantage:

- (1) Rapid Hardening – Ready for tiling over after 3-4 Hours.
- (2) Easy installation with various thicknesses.
- (3) Ideal for patching holes and cracks in masonry and concrete substrates.
- (4) Can be used as a ramping product.
- (5) Suitable as a temporary wear surface.

### Application Range:

ARDEX A 50 is ideal for:- repairing and refacing concrete stair treads and risers, cement/sand screeds, concrete floors etc; filling and patching cracks in walls, ceilings, soffits etc; making good around door and window frames, around pipe work etc; forming ramps from 1.5mm to normal screed thicknesses; forming coves etc, prior to applying in-situ resin floorings.

A suitable covering/coating is required if used as a permanent wear surface.

### PACKAGING & SHELF-LIFE:

25kg, 6 months.



## ARDEX P 20 粉末型界面剂 Powder Primer

### 产品说明:

ARDEX P 20 粉末型界面剂是由特种水泥、精选级配骨料、高分子聚合物以及特殊添加剂组成的。适用于室内外吸收性基层的界面处理，提高基层与砂浆找平层的粘结强度，避免砂浆找平层的空鼓。

### 产品优点:

- (1) 预防空鼓：避免后续砂浆找平层与基层因粘结力差而引起空鼓；
- (2) 省时：无需养护，比传统的甩浆拉毛工艺节省了3~5日的养护时间；
- (3) 省工：无需浇水，即可进行后续施工。



(1) 锤击试验，水泥底板破坏了，砂浆依然粘贴牢固

(3) 基层不浇水

### 应用范围:

适合于混凝土，轻质砌块，水泥纤维板等高吸收性的基层。

### 包装及储存期:

25kg, 12个月

### Description:

ARDEX P 20 Powder Primer consists by special cement, selective filler, superpolymer and special additives. Suitable for priming of absorbent substrate to enhance the bonding strength between screed/render to the substrate.

### Advantage:

- (1) Reduces void in the bonding layer: insufficient bonding strength occurs when the renders/screeds has voids. ARDEX Powder Primer helps prevent this;
- (2) Time and labor saving: The traditional method often requires 3-5 days of curing time. ARDEX Powder Primer requires no waiting time with the "wet on wet" method.

### Application Range:

Suitable for highly absorbent substrates such as concrete, aerated concrete, fiber-cement board, etc.

### Packaging & Shelf-life:

25kg, 12 months.



## ARDEX P 60 多用途界面剂 Multiprimer

### 产品说明:

ARDEX P 60 多用途界面剂是水性多功能界面剂，用于提高 ARDEX 产品和多种吸收性基层之间的粘结性能。该界面剂施工便捷，可使用刷子或滚筒进行施工，后续施工可以快速跟进，将施工区域的暂停使用时间减少到最低程度。

### 产品优点:

- (1) 预防空鼓：避免后续砂浆找平层与基层因粘结力差而引起空鼓；
- (2) 避免起粉：避免基层吸水率过高导致后续砂浆层的水化反应不足而产生起砂、起粉；
- (3) 省时：施工效率高，等待时间短。

### 应用范围:

适合于石膏板，混凝土，水泥砂浆找平等吸收性基层。适用于室内和室外的墙面和地面。

### 包装及储存期:

20kg, 12个月

### Description:

ARDEX P 60 is a water-based primer used for improving the adhesion of ARDEX products to various porous substrate. It is easy to apply with a sponge, brush or roller with applications of subsequent products able to take place with minimal downtime.

### Advantage:

- (1) Reduces voids in the bonding layer: insufficient bonding strength occurs when the renders/screeds have voids. ARDEX P 60 Liquid Primer helps prevent this;
- (2) Avoid chalking of screed leveling layer: By preventing water loss of the render/screed by reducing the absorbency of the substrate;
- (3) Time and labor saving: Increases efficiency and shortens the waiting time.

### Application Range:

Suitable for absorbent substrates such as gypsum board, concrete, screeds, renders, etc. Suitable for both internal and external, wall or floor applications.

### Packaging & Shelf-life:

20kg, 12 months.



**ARDEX P 82**  
双组份合成树脂底涂剂  
Water Dispersed Epoxy Primer

#### 产品说明:

ARDEX P 82 为无溶剂双组份反应合成树脂。具有不燃，无腐蚀性等特点。ARDEX P 82 适用于大部分基层，尤其是平滑致密的基层。

#### 产品优点:

- (1) 使找平砂浆、水泥基瓷砖粘结剂等水泥基材料在致密型不吸收基层（如：钢板、玻璃、釉面等）上使用，粘结力才超强，不空鼓，不掉砖；
- (2) 安全环保：运输、储存安全可靠。

#### 应用范围:

适合钢板、玻璃、瓷砖表面等非吸收性的致密基层。

#### 包装及储存期:

2kg/组或6kg/组，12个月。

#### Description:

ARDEX P 82 is a two-part water based synthetic dispersion primer and bonding agent. It is non-flammable and non-corrosive. ARDEX P 82 forms a priming/bonding layer on most substrates, particularly smooth or dense surfaces.

#### Advantage:

- (1) Wide Range of substrates, excellent adhesion;
- (2) Safe and environmental friendly: safe for delivery and storage.

#### Application Range:

Suitable for non-absorbent substrates such as, steel, glass, glazed tiles, etc.

#### Packaging & Shelf-life:

2kg/set or 6kg/set, 12 months.



**ARDEX P 51**  
界面剂  
Primer and Bonding Agent

#### 产品说明:

ARDEX P 51 可作为湿气抑制、浸封底层孔隙、接着界面剂等使用。作为底涂剂主要功能为抑制底层孔隙中所含空气上升导致后续表面气孔产生，及避免功能性砂浆拌合施工后其水分过快被底层吸收造成水化作用的不完整。ARDEX P 51 亦可作为暂时性的表面浸封使用，能达到防污防尘及较好养护的效果。

#### 产品优点:

- (1) 安全，使用范围广；
- (2) 增强界面接着及封闭毛细孔；
- (3) 防止基底湿气上升造成表面气孔；
- (4) 无溶剂成分。

#### 应用范围:

室内用料。作为砂浆与基层间的界面接着，广泛使用在自流平、瓷砖胶粘剂、防水膜、腻子或镟整修补砂浆施工前的打底动作；底层为混凝土、水泥砂浆、发泡轻质砌块、红砖、石膏板、水泥纤维板及木质压密板上都可使用。

#### 包装及储存期:

20L/10L/5L桶装，未开封室内阴干处约为12个月。

#### Description:

This product is used to prepare internal surfaces to receive cement-based levelling compounds, adhesives, screeds, as well as plaster-based materials, improving adhesion and inhibiting penetration of water in intermittently damp locations. It is used as a pore sealer on floor surfaces to prevent air bubbles rising through subsequently applied sub-floor smoothing and levelling compounds and to prolong their flow life and workability. Only for use as a primer on floors that are dry and have an effective damp proof membrane.

#### Advantage:

- (1) Safe primer with a wide application range.
- (2) Primer, bonding agent and water – inhibiting pore closer.
- (3) Prevent air bubbles rising from the sub-floor when finishing.
- (4) Solvent - free.

#### Application Range:

Priming sound and dry plaster surfaces prior to the application of ARDEX cement-based adhesives.  
Priming and as a bonding agent on absorbent cement/sand screeds prior to applying ARDEX sub-floor smoothing compounds.  
A bonding agent on smooth concrete walls prior to applying plaster-based compounds.

#### Packaging & Shelf-life:

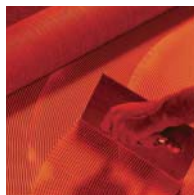
Polyethylene containers of 20kg, 5kg and 1kg.  
ARDEX P 51 has a storage life of not less than 12 months in the original unopened containers.



**Floor Levelling Compounds/  
Repair Mortars**  
自流平/修补砂浆



**Waterproof Coatings**  
防水, 防潮



**Floorcovering Adhesives**  
地材粘结剂



**Resin Flooring**  
树脂地坪



**Fast Levelling Screeds**  
快速找平砂浆



**Tile Adhesives**  
瓷砖粘结剂



**Tile Grouts**  
填缝剂



**Primer, DPM's,  
Penetrating Screed  
Renovation System**  
界面剂

**ARDEX WORLDWIDE**



亚地斯建材（上海）有限公司  
ARDEX (SHANGHAI) CO., LTD.  
上海市中山南路505号13号楼3楼  
Tel: +86-21-6152-6722  
Fax: +86-21-6152-6726  
Email: info@ardexchina.com  
www.ardexchina.com

- 香港 Hong Kong
- 北京 Beijing
- 广州 Guangzhou
- 成都 Chengdu



德国亚地斯

2016.07



产品型录及公司员工或代理商、经销商所提供的产品资料，皆是根据我们以往丰富的实务经验，诚挚地为客户解决工程问题。公司本着持续研发的一贯目标，在任何时刻我们将保有权利更新产品最新资料。我们也保证持续提供高品质的产品。然而，因本公司无法掌控工地现场或施工操作，故不承担由此造成的任何损失或损坏的相关责任。