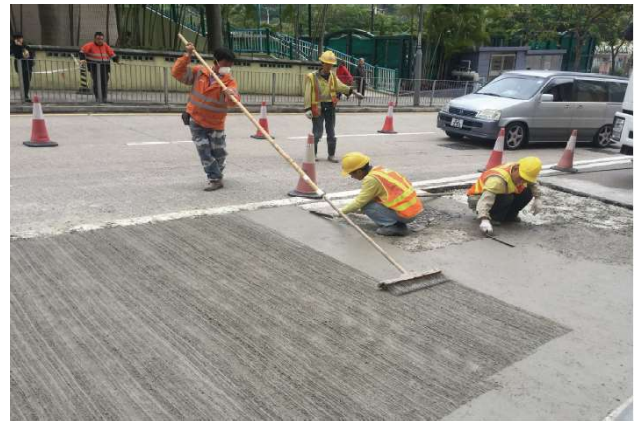
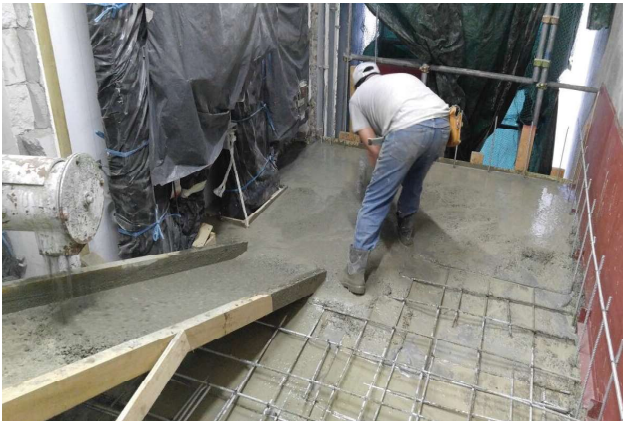


Pre-batched Concrete

ST-PPC

Factory Pre-batched Concrete with cementitious materials, coarse & fine aggregates and properties enhancement additives designed for different workabilities and concrete grades with or without special requirements such as early strength or waterproofing subject to project need.



PRODUCT DESCRIPTION

ST-PPC is a pre-batched proprietary concrete which is specifically designed for new or repair concrete with different characteristic strengths with or without early strength requirements. ST-PPC can be used for casting new structures or patching/repairing old structures. The ingredients of ST-PPC are cementitious materials, 10 mm aggregate, graded fine aggregate and properties enhancement additives while only addition of water is required for mixing on site. Alternatively, it is also the option of the client to choose the exclusion of coarse and/or fine aggregate, which will then be added on site, in the packing to suit various project needs. ST-PPC can be mixed with various types of mixer such as pedal type electrical mixer, pan mixer or continuous mixer. Other mixing method may also be applicable but prior advice from Score Tech is preferred.

APPLICATION

There is basically no difference between Score Tech Pre-batched Concrete ST-PPC and ordinary ready mixed concrete regarding formwork design, casting procedure, compaction requirement and curing method. No specific skill is required except when early strength is required, cares should be paid to the shortened workable time.

FEATURES & BENEFITS

- ◆ Premixed in factory
- ◆ Easy handling and storage
- ◆ One component package and is therefore easy for quality control on site
- ◆ Only require addition of water
- ◆ Enhanced waterproofing property

AREAS OF APPLICATION

- ◆ Concrete slabs, columns, walls and any other structural elements
- ◆ Used as floor screeding material
- ◆ Restoration of carriageways, carports, public passageways, runways, aprons and any other structural elements
- ◆ Topping material on old concrete
- ◆ Water retaining structures
- ◆ Consult Score Tech's staff for other suitable applications

MIXING & INSTALLATION

Mix ST-PPC dry material with suitable quantity of water as recommended in the method statement prepared by Score Tech with mechanical mixer. When mixing ST-PPC with pedal type electric mixer, pan mixer or drum mixer, put water into the container for mixing first and then add dry material to water while the mixer is turned on. In case additional coarse or fine aggregate is to be added on site, the proportion shall be strictly in accordance with the recommendation given by Score Tech. The required mixing time for ST-PPC depends on the type and efficiency of the mixer employed and shall be verified by site trial. Mix the concrete until a lump-free homogeneous mix with suitable workability is achieved. The well mixed concrete can then be used for application. When mixing ST-PPC with a continuous mixer, calculate the required water inflow rate of the continuous mixer in accordance with the manufacturer's instruction.

CURING

Cure ST-PPC in the same way as ordinary concrete to attain its best performance. For ST-PPC with early strength properties used in large slab, carriageways, runways or aprons, cover the concrete with canvas or polythene sheets immediately after forming the surface texture to prevent moisture loss during rapid hydration stage for ensuring best performance of surface hardness.

PACKAGE

25 kg bag or 1 ton bag

SHELF LIFE

ST-PPC has a shelf life of 6 months if being well kept in dry condition on lifted floor.

HEALTH & SAFETY

Wear NIOSH approved face mask or equivalent personal protective equipment when handling the material. ST-PPC contains cement which may cause an allergic effect or irritation to eyes and skin. When contact with eyes, flush immediately with large quantity of water.

REFERENCE STANDARDS

- ◆ British Standard: BS 5075; BS 1881
- ◆ Hong Kong Standard: HKHA MTS Spec. Part D; CS1 : 2010

PRODUCT INFORMATION

Aggregate Type	10 mm aggregate
Compressive Strength at 28 days	Subject to customers' requirement
Early Strength	Subject to customers' requirement
Yield	Varies with different mix proportions for different requirements. Consult ScoreTech staff for details.

DISCLAIMER

Note: As the application condition may vary from site to site and may not be identical to the same condition under which the parameters in the brochure are drawn, the information provided on this Technical Data Sheet is for general guidance only. Warranty will not be given to the ultimate performance and application results of this material when the material is not kept, mixed, applied or cured strictly in accordance with the requirements and/or instructions listed out in this brochure or in other supplementary document.

SCORETECH
MASTERING TECHNOLOGY AND PRACTICALITY

Tel: 852-2165 0900
Fax: 852-2590 0511
Email: enquiry@scoretech.com.hk
Website: www.scoretech.com.hk

PPC-E-OCT-2024-02P